

SAB 120-151
Screw compressor unit



Contents

1. Service parts list SAB 120/151	2
1.1.1 How to use the spare parts list	2
1.1.2 Recommended spare parts	4
1.1.4 General arrangement SAB 120/151	6
1.1.5 Screw compressor, typical (XJF 151 shown)	10
1.1.6 Oil separator, typical (SAB151 L/E shown)	14
1.1.7 Oil filter, single, typical (SAB 151 L/E shown)	18
1.1.8 Oil filter, dual, typical (SAB 151 L/E shown)	20
1.1.9 Oil cooler piping, typical (SAB 151 L/E shown)	22
1.1.10 Liquid injection	24
1.1.11 Suction/discharge/service/stop valve, typical	28
1.1.12 Spare parts list for all suction/discharge/service/stop valves	29
1.1.13 Discharge stop/check valve - SAB 120, SAB 151 and SAB 193	30
1.1.14 Spare parts list for check valve	30
1.1.15 Economizer	32
1.1.16 Oil pump	34
1.1.17 Coupling assembly	36
1.1.18 Piping and instrumentation, typical	38
1.1.19 Compressor ports locations	41
2. Numerical parts list	43
2.1.1 Parts list	43

1. Service parts list SAB 120/151

1.1.1 How to use the spare parts list

SAB Rotary screw compressor unit

This spare parts list applies to standard Sabroe rotary screw compressor units, models SAB 120/151.

Units built with special options, modifications or conversions are not considered.

Item numbers only apply to units with PED (Pressure Equipment Directive 97/23/EC) approval when this is relevant.

Concerning rotary screw compressors (models XJF) and Unisab control systems, please refer to specific spare parts lists.

The spare parts list provides identification for detail parts by *Figure* and *Index number* (*Fig-Index* column), *Item number* and *Description*.

To find the correct replacement item, locate the item in Figure 1, 2, etc. Note the *Index number* and refer to the corresponding *Fig-Index* in the spare parts list to see *Item number* and *Description*.

Consider that some parts depend on voltage, set pressure etc. and that your unit may have a special modification.

Some figure numbers are not applicable for this spare parts list, eg figures 11 and 15 and are therefore excluded.

Quantity per assembly or item is stated in the *Qty.* column and always applies to each unit unless otherwise specified. If the quantity is 0 (zero) this either means that the *Item number* is included as information only or it may be that the actual quantity is stated elsewhere eg under *Description* or in a footnote.

Some of the *Item Numbers* are included for information purposes only and are not usually considered spare parts.

If the word "Assembly" (not the abbreviation "Ass.") is included in *Description*, the *Item number* may be included for information purposes only and is not necessarily a spare part. Please contact Refrigeration Parts Centre for more information.

The *P&I Ref.* column contains the connection designation of the item as shown in a typical P&I diagram (see fig. 16) as well as the P&I diagram of your particular unit when this is relevant. A reference like P128 means item no. 128 and can only be seen in your specific P&I diagram.

Unit of measure in the *Description* column etc. is always stated in SI-units unless otherwise specified, eg subfixed " " if in inches.

American drawing standards, third angle projection method, are used in all figures.

The Numerical parts list at the end of the manual can be used to locate a specific item in the spare parts list. Look for the part by *Item number* and it will refer to the *Figure and Index number* (*Fig-Index* column) where it is located.

Abbreviations for more than one item or model eg:

SAB 120/151S means SAB 120 S + SAB 120 L + SAB 120 M + SAB 120 E + SAB 151 S

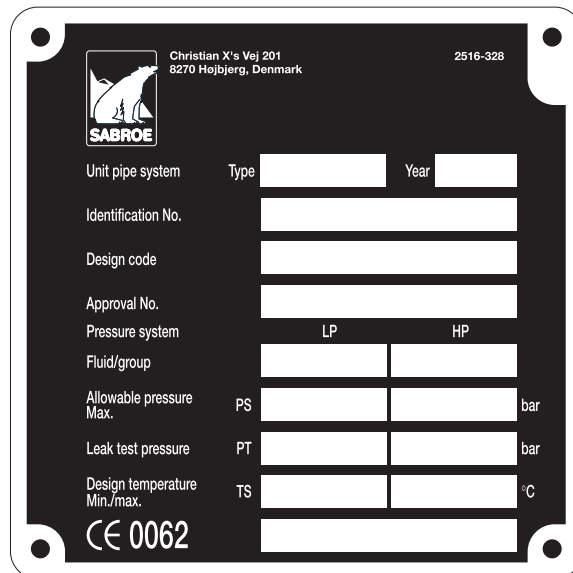
LG-1/2/3 means LG-1 + LG-2 + LG-3

Abbreviations in this manual include:

Ang.	angle	OD=	outside diameter equal to
Ass.	assembly	Rc.	cooling medium refrigerant
Cp.	compressor	Reg	regulating
DN (+space)	nominal diameter	Sc.	seal cap
f .	for	Ser.	service
g	gauge	Str.	straght
Hex.	hexagon	Wc.	cooling medium water
ID=	inside diameter equal to	∅	diameter (ISO-standard)
L=	length equal to		
N/A	not applicable or not available		

The unit pipe system name plate (example below) listing unit pipe system type, year and identification number etc., is attached to the frame below the electric motor.

Note: Please provide Sabroe unit pipe system type, year and identification number when requesting a quotation or placing an order. Failure to include this information may delay the processing of your request.



Christian X's Vej 201
8270 Højbjerg, Denmark

2516-328

SABROE

Unit pipe system Type Year

Identification No.

Design code

Approval No.

Pressure system LP HP

Fluid/group

Allowable pressure Max. PS bar

Leak test pressure PT bar

Design temperature Min./max. TS °C

CE 0062

1.1.2 Recommended spare parts

Note: There is no specific drawing for this figure. This list is based on one typical unit. Consider that your unit may have some special modifications. When stocking for more than one unit, the quantity should be adjusted to meet your individual requirements.

1.1.3 List 00

Fig-Index	P&I Ref.	Item number	Description	Qty.	SAB120S	SAB120M	SAB120L	SAB120E	SAB151S	SAB151M	SAB151L	SAB151E
00-01		531B0099H02	Filter, coalescing, convoluted	1	X	X	X	X				
00-01		531B0099H01	Filter, coalescing, convoluted	1					X	X		
00-01		531B0099H01	Filter, coalescing, convoluted 1 or 2 pcs. (A)	0							X	X
00-01		1331.604	O-ring ø329,57 x 5.33 , Manway	1	X	X	X	X	X	X		
00-01		1331.605	O-ring ø380,37 x 5.33 , Manway	1							X	X
00-02		531A0224H02	Element, super filter II (K)	1	X	X	X	X	X	X	X	X
00-02		720M0213G01EU	Spare parts kit f. each oil filter (filter element and gasket)	1	X	X	X	X				
00-02		720M0366G01EU	Spare parts kit f. each oil filter (filter element and gasket)	1					X	X	X	X
00-02		959A0082H02	Gasket for oil filter (K)	1	X	X	X	X	X	X	X	X
00-03	TE-1/3	1373.325	Temperature sensor including pocket, L=130	1	X	X	X	X	X	X	X	X
00-03	TE-2	1373.319	Temperature sensor including pocket, L=80	1	X	X	X	X	X	X	X	X
00-03	TE-4	1373.326	Temperature sensor including pocket, L=95	1	X	X	X	X	X	X	X	X
00-03	TE-1/3	1377.441	Temperature sensor, L=130 (I)	1	X	X	X	X	X	X	X	X
00-03	TE-2	1377.438	Temperature sensor, L=80 (I)	1	X	X	X	X	X	X	X	X
00-03	TE-4	1377.442	Temperature sensor, L=95 (I)	1	X	X	X	X	X	X	X	X
00-03	TE-1/2/3 /4	1349.135	Seal ring, bonded, for G 1/4 A (H) (for pocket sealing purpose)	1	X	X	X	X	X	X	X	X
00-04	PE-1/2/3	1373.340	Pressure transducer, -1/25 bar (AC)	1	X	X	X	X	X	X	X	X
00-04	PE-4	1373.339	Pressure transducer, -1/9 bar (AC)	1	X	X	X	X	X	X	X	X
00-04	PE-1/2/3	1373.338	Pressure transducer, -1/25 bar 4-20 mA / 24 VDC (Z) (AD)	1	X	X	X	X	X	X	X	X
00-04	PE-4	1373.337	Pressure transducer, -1/9 bar 4-20 mA / 24 VDC (Z) (AD)	1	X	X	X	X	X	X	X	X
00-05	HTR-1/2	1555.122	Ass., Oil heater, 500W/120V	1	X	X	X	X	X	X	X	X
00-05	HTR-1/2	1555.124	Ass., Oil heater, 500W/240V	1	X	X	X	X	X	X	X	X
00-06	YY-1/2	1372.409	Control valve block Yuken P/N DSG-01-3C2-R110-N-70909 120V (Y)	1	X	X	X	X	X	X	X	X
00-06	YY-1/2	1372.404	Control valve block Yuken P/N DSG-01-3C2-R220-N-70909 240V (Y)	1	X	X	X	X	X	X	X	X
00-06		951A0113H20	Seal kit f. four-way solenoid valve	1	X	X	X	X	X	X	X	X
00-07		1372.538	Coil 10W 110V 50/60Hz (n)	1	X	X	X	X	X	X	X	X
00-07		1372.537	Coil 10W 220/230V 50/60Hz (n)	1	X	X	X	X	X	X	X	X

Fig-Index	P&I Ref.	Item number	Description	Qty.	SAB120S	SAB120M	SAB120L	SAB120E	SAB151S	SAB151M	SAB151L	SAB151E
00-08		951A0095H01	Coil 11W 120V 50/60Hz (u)	1	X	X	X	X	X	X	X	X
00-08		951A0095H02	Coil 11W 240V 50/60Hz (u)	1	X	X	X	X	X	X	X	X
00-09	YY-3/4	951A0095H01	Coil 11W 120V 50/60Hz (AA)	1	X	X	X	X	X	X	X	X
00-09	YY-3/4	951A0095H02	Coil 11W 240V 50/60Hz (AA)	1	X	X	X	X	X	X	X	X
00-09	YY-3/4	950A0293H02	Coil 110/120V 50/60Hz (AB)	1	X	X	X	X	X	X	X	X
00-09	YY-3/4	950A0293H01	Coil 208/240V 50/60Hz (AB)	1	X	X	X	X	X	X	X	X
00-10	LSL-1	1553.423	Switch, oil level sensing, 24V (AC)	1	X	X	X	X	X	X	X	X
00-10	LSL-1	1553.422	Switch, oil level sensing, 24V (AD)	1	X	X	X	X	X	X	X	X
00-10		1349.248	Seal ring, steel, $\varnothing 26/21.1 \times 4.5$	1	X	X	X	X	X	X	X	X
A) Quantity depends on operating conditions of the unit												
H) Quantity is for each sealing purpose												
K) Quantity is for each oil filter												
Y) Including all mounting hardware (coils, cable connectors and gaskets, seal kit)												
Z) For package without Unisab II control only												
l) Repair kit complete (sensor insert with connector) excluding pocket												
n) Only for solenoid valve in liquid injection cooling												
u) If liquid injection, dual flow												
AA) If replacing product supplied by PE Valve												
AB) If replacing product supplied by Danfoss												
AC) For package with Unisab II control only												
AD) For package with Unisab III control only												

1.1.4 General arrangement SAB 120/151

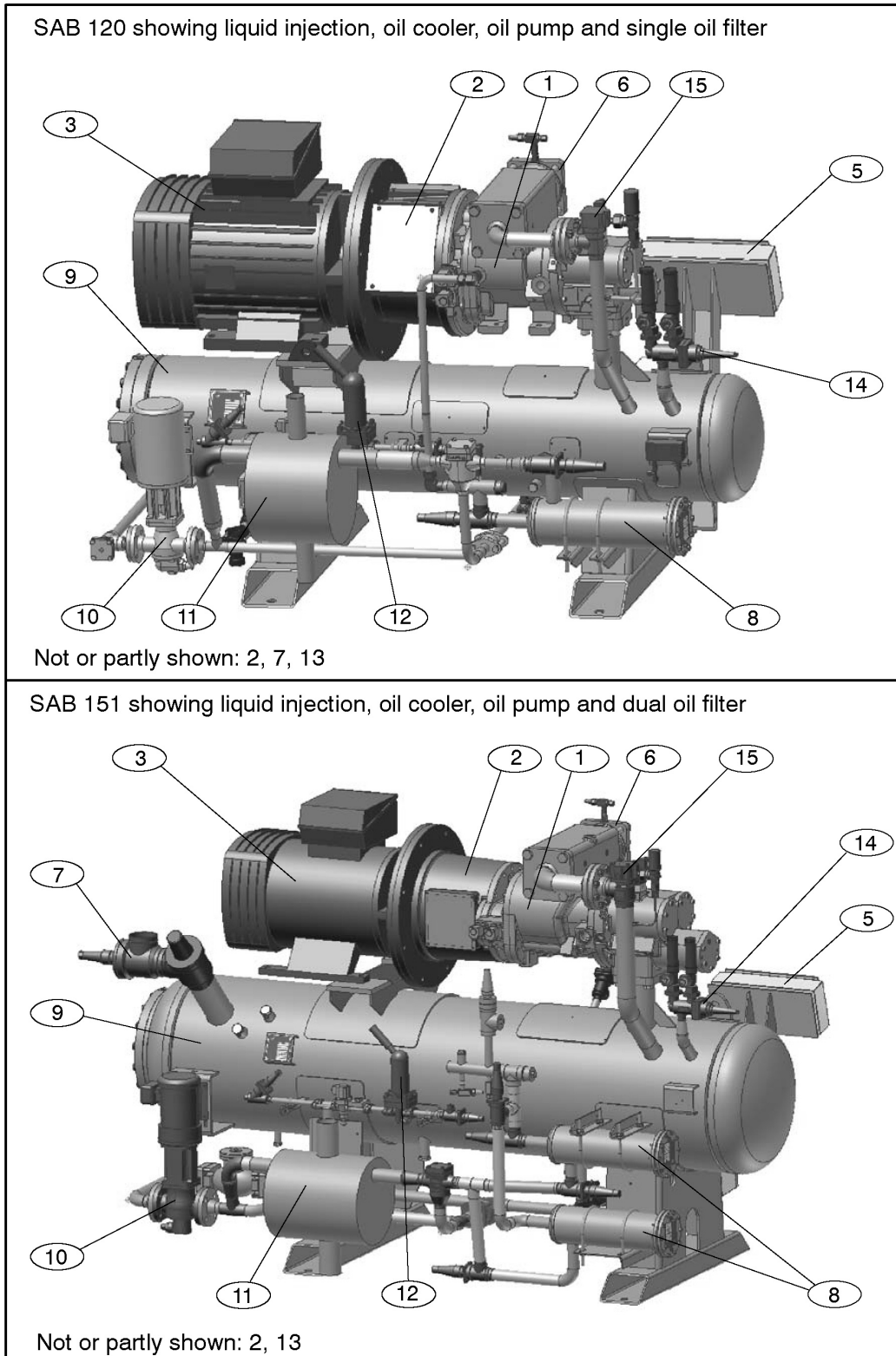


Fig. 1: Drawing for list 01

List 01

Fig-Index	P&I Ref.	Item number	Description	Qty.	SAB120S	SAB120M	SAB120L	SAB120E	SAB151S	SAB151M	SAB151L	SAB151E
01-01		INF	See further information f. compressor in fig.2 or Ser. Part List f. XJF Cp.	1	X	X	X	X	X	X	X	X
01-02		INF	See further information f. coupling in fig.14	1	X	X	X	X	X	X	X	X
01-03		INF	See further information for motor specifications in the Operating Manual	1	X	X	X	X	X	X	X	X
01-04		UI	Unused Index	0	X	X	X	X	X	X	X	X
01-05		INF	See further information in the Unisab manual	1	X	X	X	X	X	X	X	X
01-06		SUC	Index 06 concerns suction stop and check valves (J) (See further information f. check valve in fig.2)	0	X	X	X	X	X	X	X	X
01-06	P101	1361.073	Stop valve, Ang., Sc., SVA-ST 80 (J)	1	X							
01-06	P101	1361.074	Stop valve, Ang., Sc., SVA-ST 100 (J)	1	X	X	X	X	X	X	X	X
01-06	P101	1361.075	Stop valve, Ang., Sc., SVA-ST 125 (J)	1		X	X	X	X	X	X	X
01-06	P101	1361.076	Stop valve, Ang., Sc., SVA-ST 150 (J)	1					X	X	X	X
01-06	PE-4	1373.339	Pressure transducer, -1/9 bar (AC)	1	X	X	X	X	X	X	X	X
01-06	PE-4	1373.337	Pressure transducer, -1/9 bar 4-20 mA / 24 VDC (Z) (AD)	1	X	X	X	X	X	X	X	X
01-07		DIS	Index 07 concerns discharge stop and check valves (J) (Q)	0	X	X	X	X	X	X	X	X
01-07	P102	1361.073	Stop valve, Ang., Sc., SVA-ST 80 (J)	1	X	X	X	X	X	X		
01-07	P102	1361.074	Stop valve, Ang., Sc., SVA-ST 100 (J)	1							X	X
01-07	P126	1372.574	Check valve, Ang., GVD 80 (T)	1	X	X	X	X	X	X		
01-07	P126	1372.589	Check valve, Ang., GVD 100 (T)	1							X	X
01-07	P126	956A0044H02	Check valve, Ang., GVD 80 (U)	1	X	X	X	X	X	X		
01-07	P126	956A0045H02	Check valve, Ang., GVD 100 (U)	1							X	X
01-08		INF	See further information for single oil filter in fig.4 and dual oil filter in fig.5	0	X	X	X	X	X	X	X	X
01-09		INF	See further information for oil separator in fig.3	0	X	X	X	X	X	X	X	X
01-10		INF	See further information for oil pump in fig.13	0	X	X	X	X	X	X	X	X

Fig-Index	P&I Ref.	Item number	Description	Qty.	SAB120S	SAB120M	SAB120L	SAB120E	SAB151S	SAB151M	SAB151L	SAB151E
01-11		INF	See further information for oil cooler in fig.6	0	X	X	X	X	X	X	X	X
01-12		INF	See further information for liquid injection in fig.8	0	X	X	X	X	X	X	X	X
01-13		INF	See further information for Economizer in fig.12	0	X	X	X	X	X	X	X	X
01-14		INF	See further information for unit safety valve in fig.3	0	X	X	X	X	X	X	X	X
01-15		INF	See further information for Cp. safety valve system in fig.16	0	X	X	X	X	X	X	X	X
J) Spare parts kits and sets for stop valve in fig.9												
Q) Spare parts kits and sets for check valve in fig.10												
T) Only at high stage operating mode												
U) Only at Booster operating mode												
Z) For package without Unisab II control only												
AC) For package with Unisab II control only												
AD) For package with Unisab III control only												

1.1.5 Screw compressor, typical (XJF 151 shown)

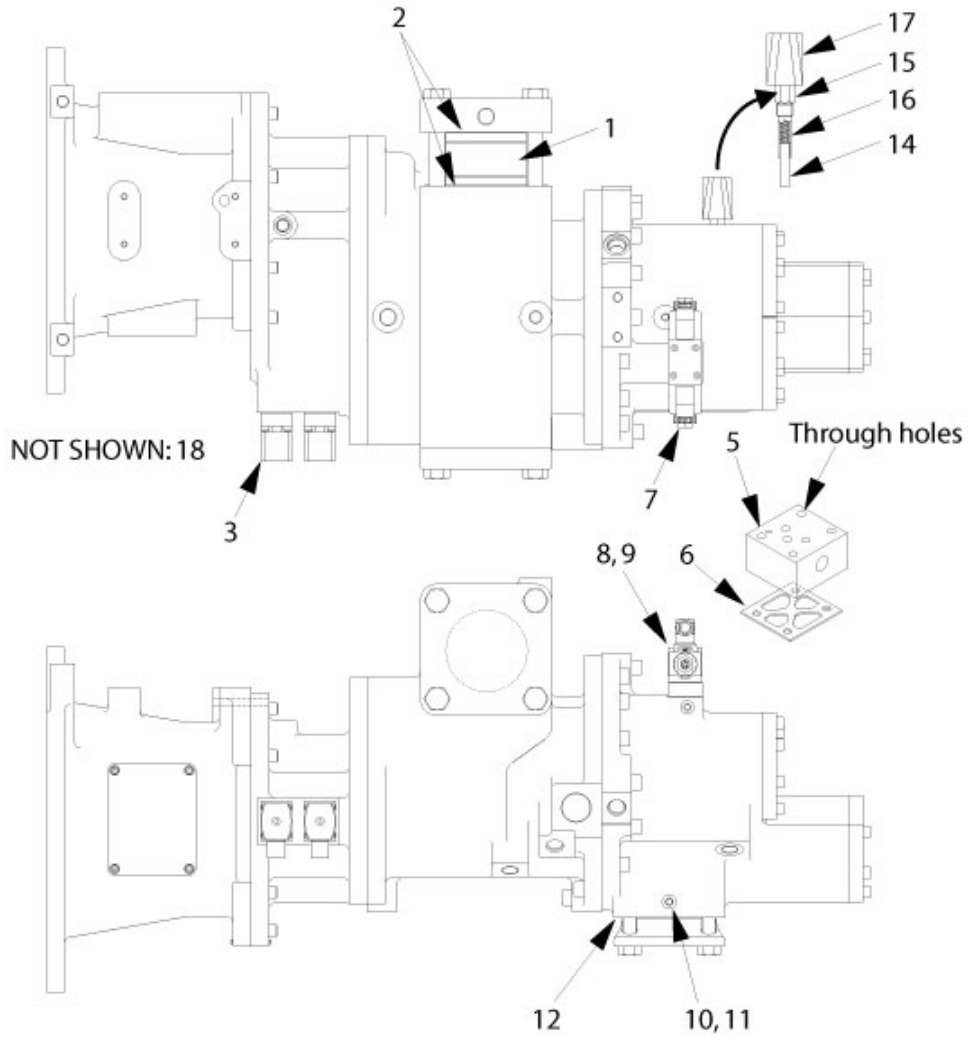


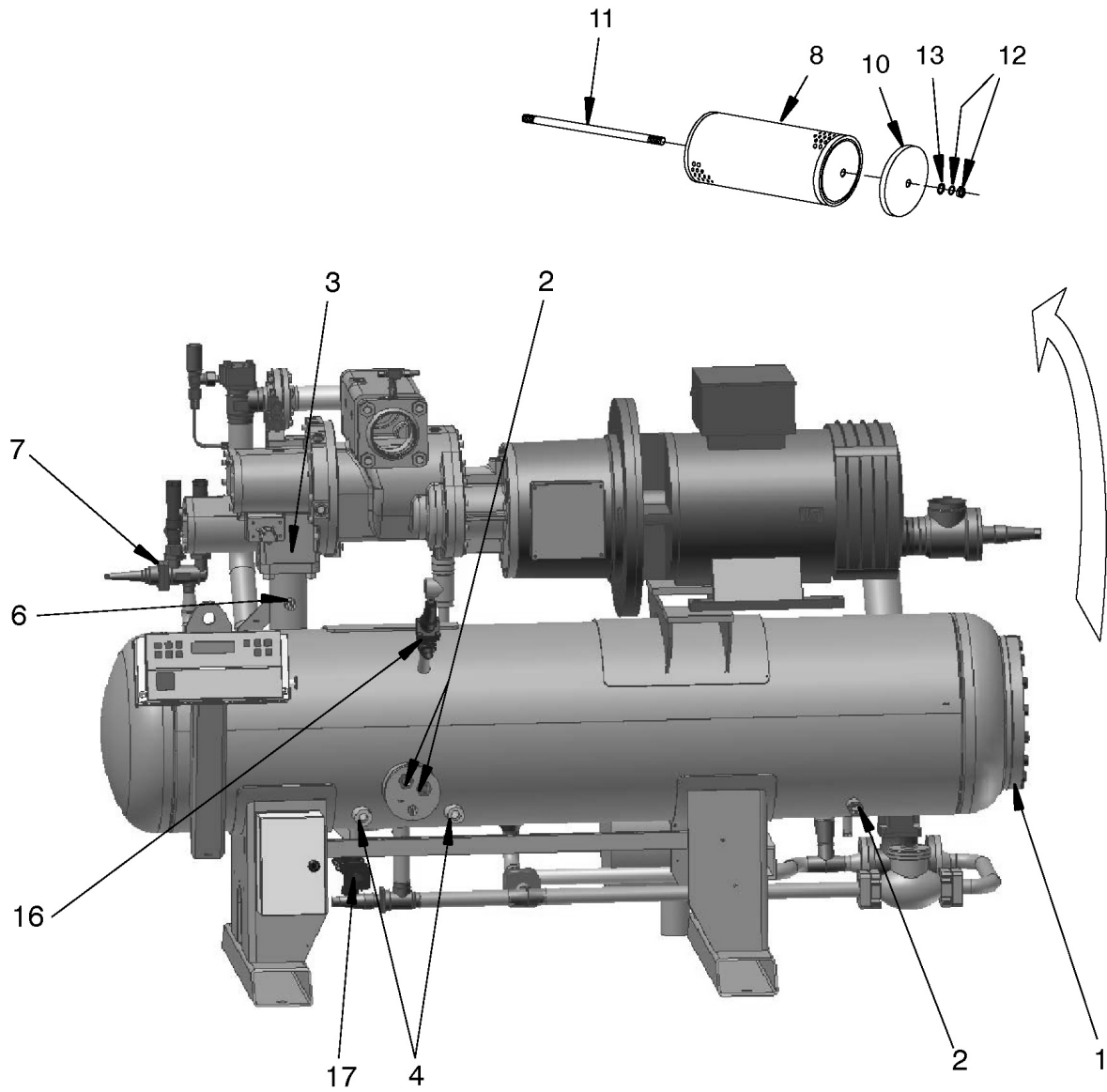
Fig. 2: Drawing for list 02

List 02

Fig-Index	P&I Ref.	Item number	Description	Qty.	SAB120S	SAB120M	SAB120L	SAB120E	SAB151S	SAB151M	SAB151L	SAB151E
02-	C-1	534E0305G01	Screw compressor XJF 120S (w)	1	X							
02-	C-1	534E0305G02	Screw compressor XJF 120M (y)	1		X						
02-	C-1	534E0305G03	Screw compressor XJF 120L (y)	1			X					
02-	C-1	534E0305G04	Screw compressor XJF 120S (y)	1				X				
02-	C-1	534E0533G01	Screw compressor XJF 151A (y)	1					X			
02-	C-1	534E0533G02	Screw compressor XJF 151M (y)	1						X		
02-	C-1	534E0533G03	Screw compressor XJF 151L (y)	1							X	
02-	C-1	534E0533G04	Screw compressor XJF 151N (y)	1								X
02-01	CV-1	1364.410	Check valve, 4"	1	X	X	X	X				
02-01	CV-1	1364.409	Check valve, 5"	1					X	X	X	X
02-02		959A0054H10	Gasket for 4" check valve	2	X	X	X	X				
02-02		959A0044H11	Gasket for 5" check valve	2					X	X	X	X
02-03	YY-3/4	951A0095H01	Coil 11W 120V 50/60Hz (AA)	2	X	X	X	X	X	X	X	X
02-03	YY-3/4	951A0095H02	Coil 11W 240V 50/60Hz (AA)	2	X	X	X	X	X	X	X	X
02-03	YY-3/4	950A0293H02	Coil 110/120V 50/60Hz (AB)	2	X	X	X	X	X	X	X	X
02-03	YY-3/4	950A0293H01	Coil 220/240V 50/60Hz (AB)	2	X	X	X	X	X	X	X	X
02-03		1372.545	DIN cable connector f. coil	2	X	X	X	X	X	X	X	X
02-03		1554.159	Gasket f. DIN cable connector	2	X	X	X	X	X	X	X	X
02-04		UI	Unused Index	0	X	X	X	X	X	X	X	X
02-05		534B1088H01	Blok, manifold f. solenoid valve	1	X	X	X	X	X	X	X	X
02-06		534B1092H01	Gasket, manifold to compressor	1	X	X	X	X	X	X	X	X
02-07		951A0114H05	Coil 110/120V 50/60Hz	2	X	X	X	X	X	X	X	X
02-07		951A0114H06	Coil 220/240V 50/60Hz	2	X	X	X	X	X	X	X	X
02-08	YY-1/2	951A0114H01	Ass., four-way solenoid valve 110/120V 50/60Hz (Y)	1	X	X	X	X	X	X	X	X
02-08	YY-1/2	951A0114H02	Ass., four-way solenoid valve 220/240V 50/60Hz (Y)	1	X	X	X	X	X	X	X	X
02-08		980A0012K58	O-ring, manifold to valve	4	X	X	X	X	X	X	X	X
02-09		951A0113H20	Seal kit f. four-way solenoid valve	1	X	X	X	X	X	X	X	X

Fig-Index	P&I Ref.	Item number	Description	Qty.	SAB120S	SAB120M	SAB120L	SAB120E	SAB151S	SAB151M	SAB151L	SAB151E
02-10	P159	1373.132	High pressure cut-off	1	X	X	X	X	X	X	X	X
02-11	PE-3	1373.340	Pressure transducer, -1/25 bar (AC)	1	X	X	X	X	X	X	X	X
02-11	PE-3	1373.338	Pressure transducer, -1/25 bar 4-20 mA / 24 VDC (Z) (AD)	1	X	X	X	X	X	X	X	X
02-12		959A0057H18	Gasket f. flange, Cp. discharge	1	X	X	X	X				
02-12		959A0057H09	Gasket f. flange, Cp. discharge	1					X	X	X	X
02-13	NV-2	1361.117	Stop valve, Ang., Sc., SNV-ST CD10 (J)	1	X	X	X	X	X	X	X	X
J) Spare parts kits and sets for stop valve in fig.9												
Y) Including all mounting hardware (coils, cable connectors and gaskets, seal kit)												
Z) For package without Unisab II control only												
w) For electric motor with 4 poles												
y) For electric motor with 2 poles												
AA) If replacing product supplied by PE valve												
AB) If replacing product supplied by Danfoss												
AC) For package with Unisab II control only												
AD) For package with Unisab III control only												

1.1.6 Oil separator, typical (SAB151 L/E shown)



Not or partly shown: 5, 6, 9, 14, 15

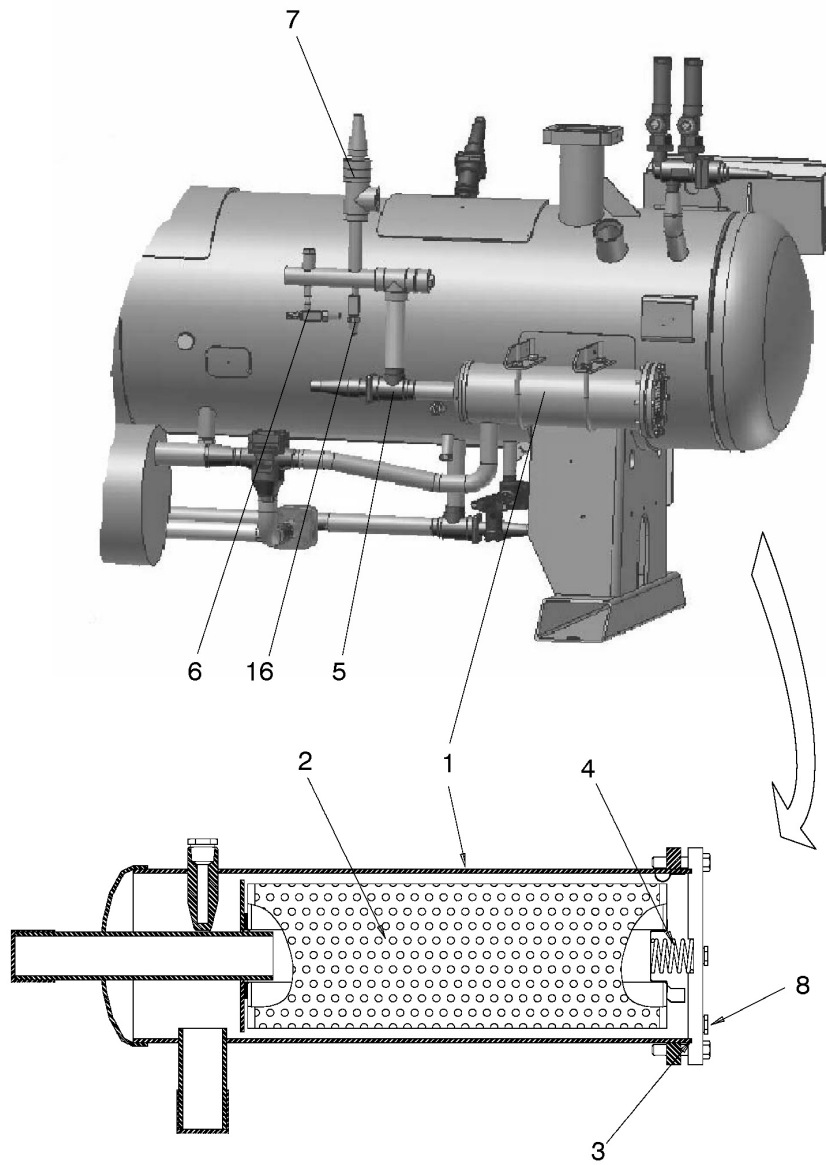
Fig. 3: Drawing for list 03

List 03

Fig-Index	P&I Ref.	Item number	Description	Qty.	SAB120S	SAB120M	SAB120L	SAB120E	SAB151S	SAB151M	SAB151L	SAB151E
03-	PV-1	548E0398EU	Assembly, oil separator OHU 04019	1	X	X	X	X				
03-	PV-1	548E0399EU	Assembly, oil separator OHU 05024	1					X	X		
03-	PV-1	548E0400EU	Assembly, oil separator OHU 06024	1							X	X
03-01		1331.604	O-ring ø329.57 x 5.33 , Manway	1	X	X	X	X	X	X		
03-01		1331.605	O-ring ø380.37 x 5.33 , Manway	1							X	X
03-02	LG-1/2/3	1226.014	Sight glass M33 x 1.5	3	X	X	X	X	X	X	X	X
03-02		2356.144	Gasket, aluminium ø40.5/33 x 1.5	3	X	X	X	X	X	X	X	X
03-03		959A0057H18	Gasket f. flange, Cp. discharge	1	X	X	X	X				
03-03		959A0057H09	Gasket f. flange, Cp. discharge	1					X	X	X	X
03-04	HTR-1	1555.122	Ass., oil heater, 500W/120V	1	X	X	X	X				
03-04	HTR-1/2	1555.122	Ass., oil heater, 500W/120V	2					X	X	X	X
03-04	HTR-1	1555.124	Ass., oil heater, 500W/240V	1	X	X	X	X				
03-04	HTR-1/2	1555.124	Ass., oil heater, 500W/240V	2					X	X	X	X
03-05	LSL-1	1553.423	Switch, oil level sensing, 24V (AC)	1	X	X	X	X	X	X	X	X
03-05	LSL-1	1553.422	Switch, oil level sensing, 24V (AD)	1	X	X	X	X	X	X	X	X
03-05		1349.248	Seal ring, steel, ø26/21.1 x 4.5	1	X	X	X	X	X	X	X	X
03-06	TE-2	1373.319	Temperature sensor including pocket, L=80	1	X	X	X	X	X	X	X	X
03-06	TE-4	1373.326	Temperature sensor including pocket, L=95	1	X	X	X	X	X	X	X	X
03-06		1349.135	Seal ring, bonded, for G 1/4 A (H) (for pocket sealing purpose)	1	X	X	X	X	X	X	X	X
03-07		2416.L19	Dual safety valve DSV 1/SFA 15 Assembly, (E) (F)	1	X	X	X	X	X	X	X	X
03-07	P103	1364.349	Double stop valve DSV 1	1	X	X	X	X	X	X	X	X
03-07	P104/ 105	1364.361	Safety valve SFA 15, 22 bar g	2	X	X	X	X	X	X	X	X
03-07	P104/ 105	1364.363	Safety valve SFA 15, 24 bar g	2	X	X	X	X	X	X	X	X
03-07	P104/ 105	1364.371	Safety valve SFA 15, 26 bar g	2	X	X	X	X	X	X	X	X
03-07		1377.257	Repair kit, gaskets for DSV 1	1	X	X	X	X	X	X	X	X
03-07		1377.255	Kit, gaskets f. two SFA 15 on DSV 1	1	X	X	X	X	X	X	X	X
03-07		1377.259	Repair kit f. SFA 15 (gaskets+cone)	1	X	X	X	X	X	X	X	X
03-08		531B0099H02	Filter, coalescing, convoluted	1	X	X	X	X				
03-08		531B0099H01	Filter, coalescing, convoluted	1					X	X		
03-08		531B0099H01	Filter, coalescing, convoluted (A) SAB 151 L/E: 1 or 2 pcs.	0							X	X
03-09		UI	Unused Index	0	X	X	X	X	X	X	X	X
03-10		540D0217G02EU	Retainer, filter end plate (B) or (C)	1	X	X	X	X	X	X	X	X
03-11		548A0068G01EU	Stud bolt, double 1/2-13 UNC x 673	1	X	X	X	X				
03-11		540D0217G03EU	Stud bolt, double 1/2-13 UNC x 918 (B)	1					X	X	X	X

Fig-Index	P&I Ref.	Item number	Description	Qty.	SAB120S	SAB120M	SAB120L	SAB120E	SAB151S	SAB151M	SAB151L	SAB151E
03-12		902A0021H01	Nut, hexagon 1/2-13 UNC (B)	2	X	X	X	X	X	X	X	X
03-13		1436.075	Washer, plain, hardened ID=13 (B) or (C)	1	X	X	X	X	X	X	X	X
03-14		1423.014	Screw, hexagon 1/2-13 UNC x 32 (C)	1							X	X
03-15		2356.272	Gasket \varnothing 225/169 x 2 (C)	1							X	X
03-16	P108	1361.052	Stop valve, Ang., Sc., SVA-ST 15 (J)	1	X	X	X	X				
03-16	P108	1361.054	Stop valve, Ang., Sc., SVA-ST 25 (J)	1					X	X	X	X
03-17	P106	1361.053	Stop valve, Ang., Sc., SVA-ST 20 (J)	1	X	X	X	X				
03-17	P106	1361.054	Stop valve, Ang., Sc., SVA-ST 25 (J)	1					X	X	X	X
A) Quantity depend on operating conditions of the unit												
B) Quantity is for each coalescer element												
C) Quantity is for each unused filter opening												
E) Only safety valves can be replaced												
F) Set pressure depend on operating conditions												
H) Quantity is for each sealing purpose												
J) Spare parts kits and sets for stop valve in fig.9												
AC) For package with Unisab II control only												
AD) For package with Unisab III control only												

1.1.7 Oil filter, single, typical (SAB 151 L/E shown)



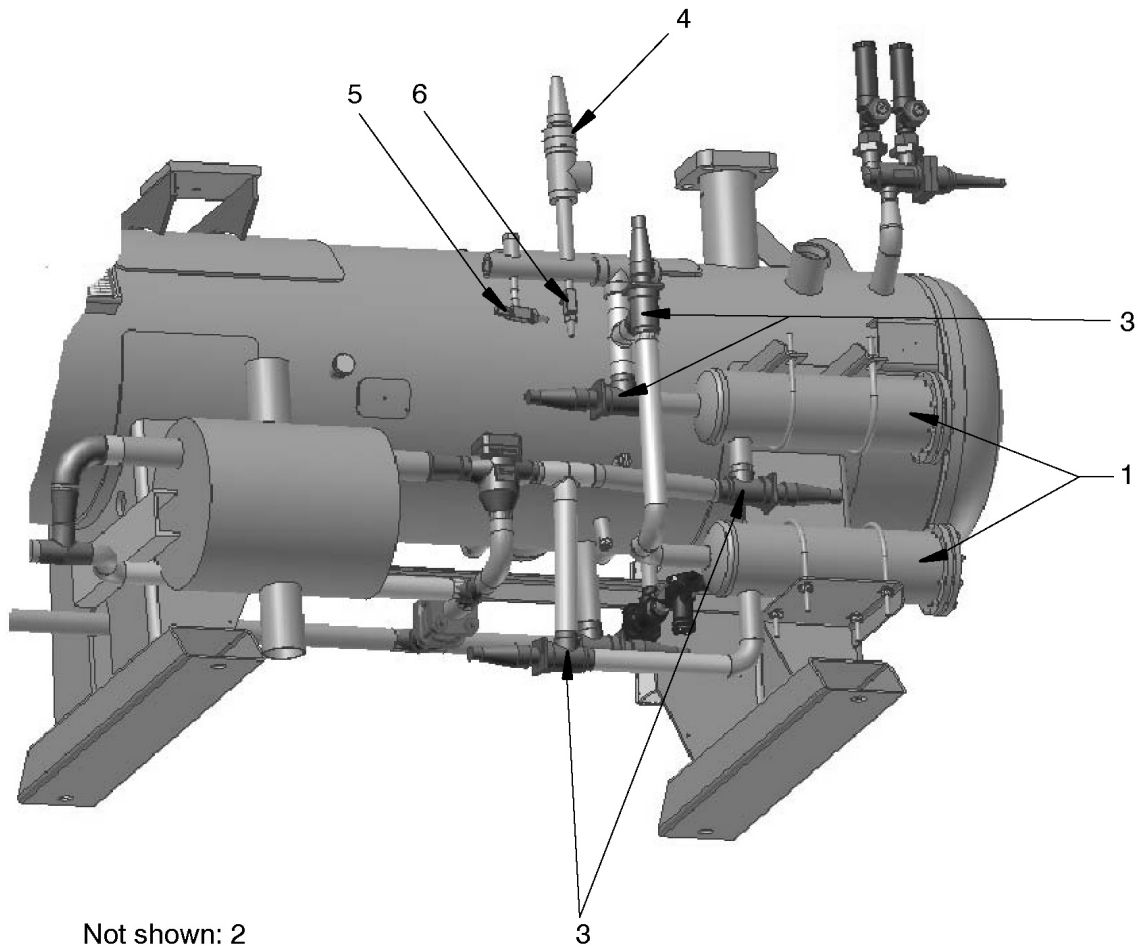
Not or partly shown: 5,8,16

Fig. 4: Drawing for list 04

List 04

Fig-Index	P&I Ref.	Item number	Description	Qty.	SAB120S	SAB120M	SAB120L	SAB120E	SAB151S	SAB151M	SAB151L	SAB151E
04-		3440.L03	Assembly, single oil filter	1	X	X	X	X				
04-		720D0409G01EU	Assembly, single oil filter	1					X	X		
04-		720M0376G01EU	Assembly, single oil filter	1							X	X
04-01	OF-1	535C0513EU	Ass., oil filter	1	X	X	X	X	X	X	X	X
04-02		531A0224H02	Element, super filter II (K)	1	X	X	X	X	X	X	X	X
04-03		959A0082H02	Gasket for oil filter (K)	1	X	X	X	X	X	X	X	X
04-04		535A0378H01	Spring for oil filter (K)	1	X	X	X	X	X	X	X	X
04-05	P123/ 135	1361.056	Stop valve, Ang., Sc., SVA-ST 40 One stop valve before and one after the oil filter (J)	2	X	X	X	X				
04-05	P123	1361.056	Stop valve, Ang., Sc., SVA-ST 40 (J)	1					X	X	X	X
04-06	P148	1361.117	Stop valve, Ang., Sc., SNV-ST CD10 (J)	1					X	X	X	X
04-07	P124	1364.325	Reg. valve, Ang., Sc., REG 40 #10 (J)	1					X	X	X	X
04-08	P121	1361.117	Stop valve, Ang., Sc., SNV-ST CD10 (J)	1	X	X	X	X	X	X	X	X
04-16	P125	1361.117	Stop valve, Ang., Sc., SNV-ST CD10 (J)	1	X	X	X	X	X	X	X	X
J) Spare parts kits and sets for stop valve in fig.9												
K) Quantity is for each oil filter												

1.1.8 Oil filter, dual, typical (SAB 151 L/E shown)



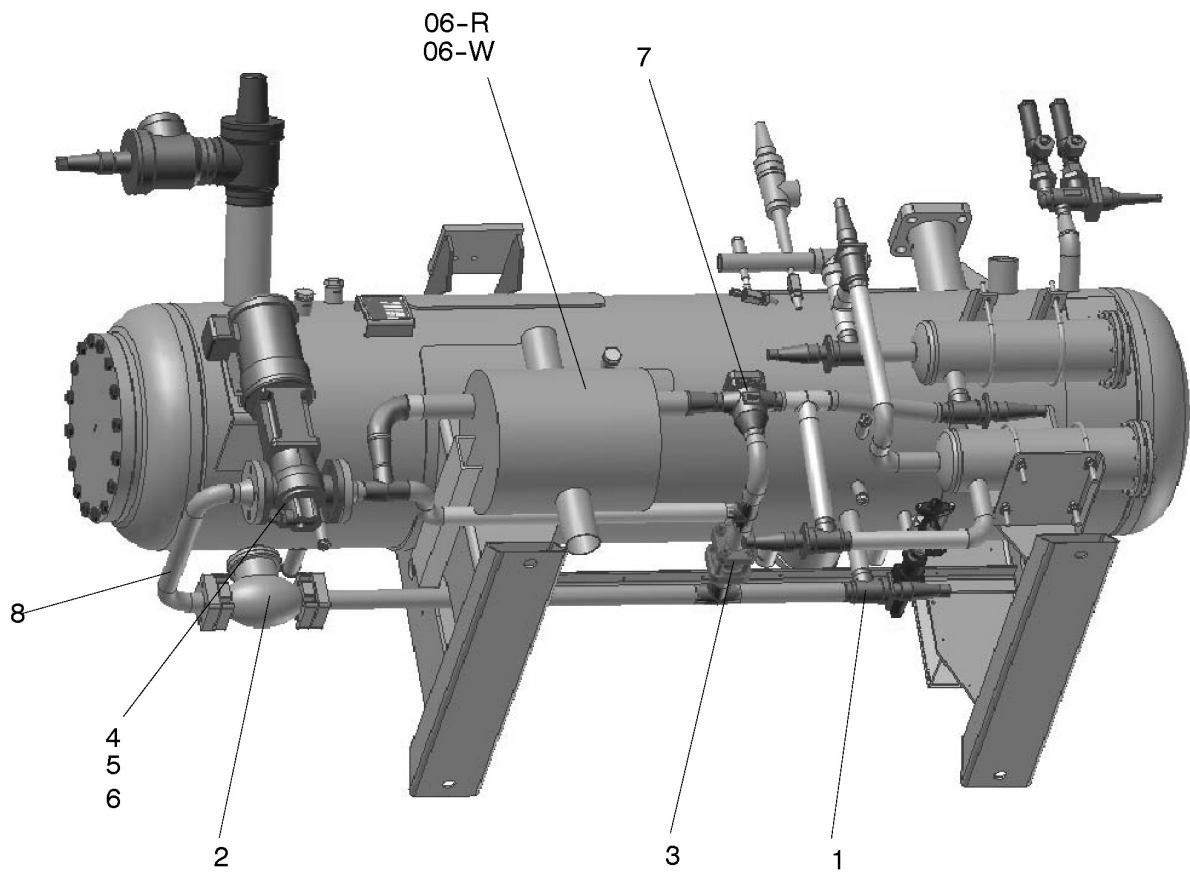
Not shown: 2

Fig. 5: Drawing for list 05

List 05

Fig-Index	P&I Ref.	Item number	Description	Qty.	SAB120S	SAB120M	SAB120L	SAB120E	SAB151S	SAB151M	SAB151L	SAB151E
05-		720D0408G01EU	Assembly, dual oil filter	1					X	X		
05-		720M0375G01EU	Assembly, dual oil filter	1							X	X
05-01	OF-1/2	535C0513EU	Ass., oil filter (D)	2					X	X	X	X
05-02	P121/ 137	1361.117	Stop valve, Ang., Sc., SNV-ST CD10 (J) (K)	1					X	X	X	X
05-03	P123/ 135/ 136/138	1361.056	Stop valve, Ang., Sc., SVA-ST 40 (J)	4					X	X	X	X
05-04	P124	1364.325	Reg. valve, Ang., Sc., REG 40 #10 (J)	1					X	X	X	X
05-05	P148	1361.117	Stop valve, Ang., Sc., SNV-ST CD10 (J)	1					X	X	X	X
05-06	P125	1361.117	Stop valve, Ang., Sc., SNV-ST CD10 (J)	1					X	X	X	X
D) See cross-sectional view in fig.4												
J) Spare parts kits and sets for stop valve in fig.9												
K) Quantity is for each oil filter												

1.1.9 Oil cooler piping, typical (SAB 151 L/E shown)



Not shown: 8

Fig. 6: Drawing for list 06

List 06

Fig-Index	P& I Ref.	Item number	Description	Qty.	SAB120S	SAB120M	SAB120L	SAB120E	SAB151S	SAB151M	SAB151L	SAB151E
06- R	TSOC	1952.084	Oil cooler PSHE 66, Rc.	1	X	X	X	X	X	X	X	X
06- R	TSOC	1952.086	Oil cooler PSHE 116, Rc.	1							X	X
06- W	WCOC	1952.085	Oil cooler PSHE 66, Wc.	1	X	X	X	X	X	X	X	X
06- W	WCOC	1952.087	Oil cooler PSHE 116, Wc.	1							X	X
06-01	P119	1361.054	Stop valve, Ang., Sc., SVA-ST 25 (J)	1	X	X	X	X				
06-01	P119	1361.056	Stop valve, Ang., Sc., SVA-ST 40 (J) (L)	1	X	X	X	X	X	X	X	X
06-01	P119	1361.056	Stop valve, Ang., Sc., SVA-ST 40 (J)	1					X	X	X	X
06-02	STR-2	950A0001H04EU	Strainer 1", flange size 1" (L)	1	X	X	X	X				
06-02	STR-2	950A0001H08EU	Strainer 2", flange size 1-1/2" (L)	1					X	X	X	X
06-02		950A0001H23	Kit for 1" strainer (L) (z)	1	X	X	X	X				
06-02		950A0001H27	Kit for 2" strainer (L) (V)	1					X	X	X	X
06-02		950A0001H39	Screen gasket for 1" strainer (L)	1	X	X	X	X				
06-02		950A0001H40	Screen gasket for 2" strainer (L)	1					X	X	X	X
06-02		950A0001H32	Flange gasket for 1" strainer (L)	2	X	X	X	X				
06-02		950A0001H34	Flange gasket for 2" strainer (L)	2					X	X	X	X
06-03	CV-2	956A0012G07EU	Check valve, Str., 1" (L)	1	X	X	X	X				
06-03	CV-2	956A0012G03EU	Check valve, Str., 1-1/2" (L)	1					X	X	X	X
06-03		959A0057H04	Gasket OD=2-5/16" (L)	2					X	X	X	X
06-04		1344.373	Flange DN 25 (L)	2	X	X	X	X				
06-04		1344.369	Flange DN 40 (L)	2					X	X	X	X
06-05		959A0054H23	Gasket OD=2-7/8" (L)	2	X	X	X	X				
06-05		959A0054H25	Gasket OD=3-3/4" (L)	2					X	X	X	X
06-06		901A0172H01EU	Kit, screws f. flange DN 25 (L)	2	X	X	X	X				
06-06		901A0172H03EU	Kit, screws f. flange DN 40 (L)	2					X	X	X	X
06-07	TCV-1	1375.116	Valve, temperature control ORV 25 H1	1	X	X	X	X				
06-07	TCV-1	2418.001	Valve, temperature control ORV 40 H1	1					X	X	X	X
06-07		1375.157	Kit, thermostat and gasket f. ORV 25/40 H1	1	X	X	X	X	X	X	X	X
06-07		1375.158	Kit, thermostat and gasket f. ORV 25/40 H2	1	X	X	X	X	X	X	X	X
		148H3246	Kit, gasket and guide ring, H1	1	X	X	X	X	X	X	X	X
		148H3247	Kit, gasket and guide ring, H2	1	X	X	X	X	X	X	X	X
06-08	P145	1361.117	Stop valve, Ang., Sc., SNV-ST CD10 (J)(L)	1	X	X	X	X	X	X	X	X
J) Spare parts kits and sets for stop valve in fig.9												
L) Only if with oil pump												
V) Consists of screen, spring and screen gasket												
z) Consists of screen and screen gasket												

List 07 is not applicable for this part list

Fig. 7: There is no drawing to list 7

1.1.10 Liquid injection

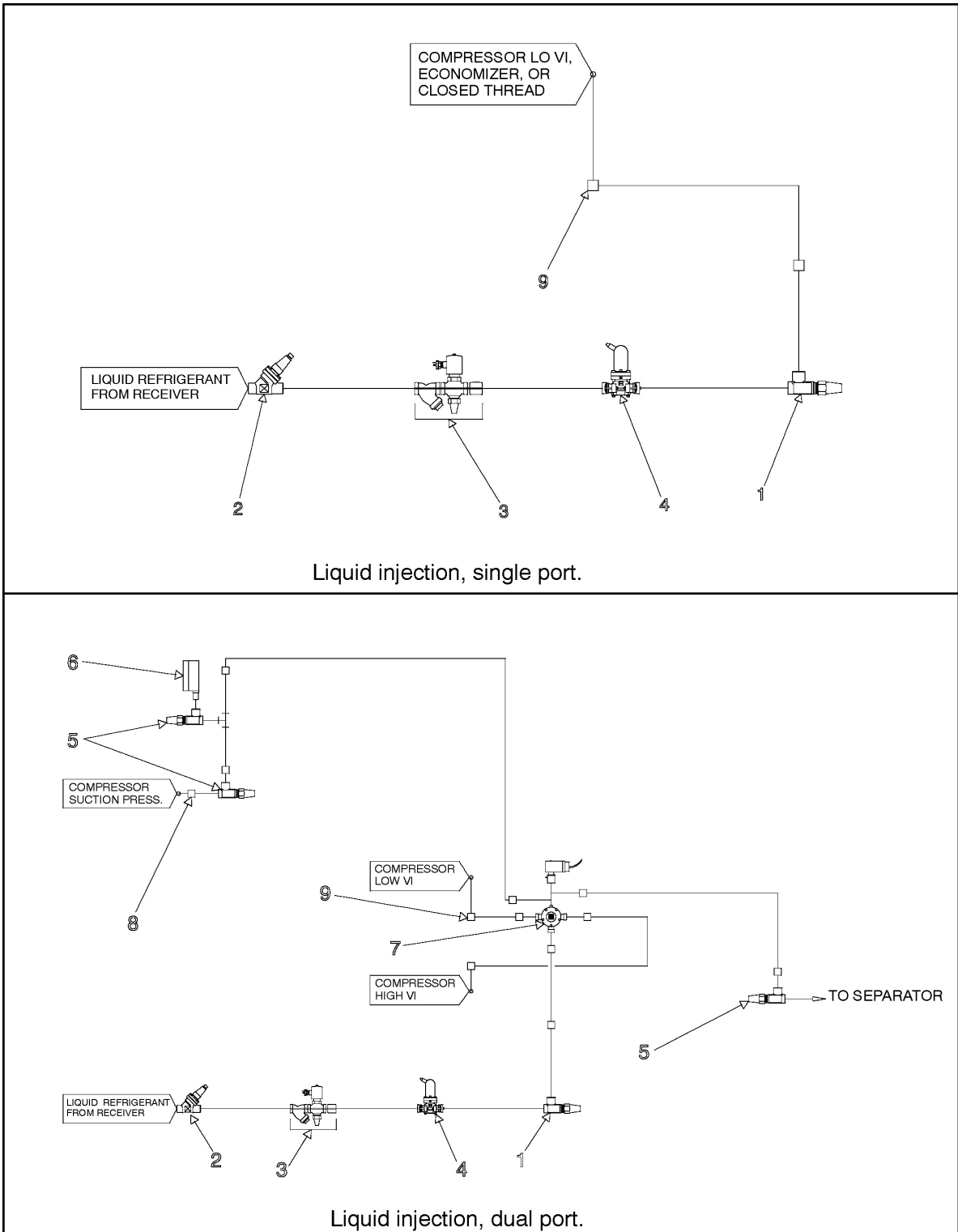


Fig. 8: Drawing for list 08

List 08

Fig-Index	P&I Ref.	Item number	Description	Qty.	SAB120S	SAB120M	SAB120L	SAB120E	SAB151S	SAB151M	SAB151L	SAB151E
08-		3449.K08	Assembly, liquid injection cooling	1	X	X	X	X				
08-		3449.K09	Assembly, liquid injection cooling	1					X	X		
08-		3449.K10	Assembly, liquid injection cooling	1							X	X
08-01	P170	1361.053	Stop valve, Ang., Sc., SVA-ST 20 (J)(q) (t)	1	X	X	X	X	X	X	X	X
08-01	P170	1361.054	Stop valve, Ang., Sc., SVA-ST 25 (J)(r) (t)	1	X	X	X	X	X	X	X	X
08-01	P170	1361.055	Stop valve, Ang., Sc., SVA-ST 32 (J)(s) (t)	1	X	X	X	X	X	X	X	X
08-01	P170	1361.079	Stop valve, Str., Sc., SVA-ST 20 (J)(q) (u)	1	X	X	X	X	X	X	X	X
08-01	P170	1361.067	Stop valve, Str., Sc., SVA-ST 25 (J)(r) (u)	1	X	X	X	X	X	X	X	X
08-01	P170	1361.064	Stop valve, Str., Sc., SVA-ST 32 (J)(r) (u)	1	X	X	X	X	X	X	X	X
08-02	P165	1361.078	Stop valve, Str., Sc., SVA-ST 15 (J) (p)	1	X	X	X	X	X	X	X	X
08-02	P165	1361.079	Stop valve, Str., Sc., SVA-ST 20 (J) (q)	1	X	X	X	X	X	X	X	X
08-02	P165	1361.067	Stop valve, Str., Sc., SVA-ST 25 (J) (r)	1	X	X	X	X	X	X	X	X
08-02	P165	1361.065	Stop valve, Str., Sc., SVA-ST 40 (J) (s)	1	X	X	X	X	X	X	X	X
08-03		1377.262	Gasket (set of 2), ring ø32/22 x 1.0 (p)	2	X	X	X	X	X	X	X	X
08-03		1336.029	Gasket (set of 2), ring ø39/29 x 1.5 (r)	2	X	X	X	X	X	X	X	X
08-03	P167	1372.395	Solenoid valve EVRAT 10 (excl. coil) (o)	1	X	X	X	X	X	X	X	X
08-03	P167	1372.347	Solenoid valve EVRA 15 (excl. coil) (p)	1	X	X	X	X	X	X	X	X
08-03	P167	1372.348	Solenoid valve EVRA 20 (excl. coil) (q)	1	X	X	X	X	X	X	X	X
08-03	P167	1372.349	Solenoid valve EVRA 25 (excl. coil) (r)	1	X	X	X	X	X	X	X	X
08-03	P167	1372.039	Solenoid valve EVRA 32 (excl. coil) (s)	1	X	X	X	X	X	X	X	X
08-03	P167	1372.538	Coil 10W 110V 50/60Hz	1	X	X	X	X	X	X	X	X
08-03	P167	1372.537	Coil 10W 220/230V 50/60Hz	1	X	X	X	X	X	X	X	X
08-03	P166	1375.174	Strainer, Str., FA 15 (p)	1	X	X	X	X	X	X	X	X
08-03		1377.250	Repair kit (strainer and gasket), FA 15	1	X	X	X	X	X	X	X	X
08-03		1377.078	Seal kit (f. cover and flange), FA 15	1	X	X	X	X	X	X	X	X
08-03	P166	1375.173	Strainer, Str., FA 20 (q)	1	X	X	X	X	X	X	X	X
08-03		1377.251	Repair kit (strainer and gasket), FA 20	1	X	X	X	X	X	X	X	X
08-03		1377.079	Seal kit (f. cover and flange), FA 20	1	X	X	X	X	X	X	X	X
08-03	P166	1375.076	Strainer (body), Str., FIA 25 D (r)	1	X	X	X	X	X	X	X	X
08-03	P166	1375.078	Strainer (body), Str., FIA 40 D (s)	1	X	X	X	X	X	X	X	X
08-03	P166	1375.082	Element 100 my for FIA 25-40	1	X	X	X	X	X	X	X	X
08-03	P168	1377.263	Sight glass SGT 15 TG (p)	1	X	X	X	X	X	X	X	X
08-03	P168	1377.268	Sight glass SGT 24 TG (r)	1	X	X	X	X	X	X	X	X
08-03	P168	2511.022	Sight glass MLI 40 D (s)	1	X	X	X	X	X	X	X	X
08-04	P169	1379.014	Actuator ICAD 600 for motor valve	1	X	X	X	X	X	X	X	X
08-04	P169	954A0070H01EU	Motorvalve ICM 20-A (excl. actuator)	1	X	X	X	X	X	X	X	X
08-04	P169	954A0070H02EU	Motorvalve ICM 20-B (excl. actuator)	1	X	X	X	X	X	X	X	X
08-04	P169	954A0070H03EU	Motorvalve ICM 20-C (excl. actuator)	1	X	X	X	X	X	X	X	X
08-04	P169	954A0071H01EU	Motorvalve ICM 25-A (excl. actuator)	1	X	X	X	X	X	X	X	X
08-04	P169	954A0072H01EU	Motorvalve ICM 32-A (excl. actuator)	1	X	X	X	X	X	X	X	X

Fig-Index	P&I Ref.	Item number	Description	Qty.	SAB120S	SAB120M	SAB120L	SAB120E	SAB151S	SAB151M	SAB151L	SAB151E
08-04		1377.447	Service kit, gaskets/O-rings f. ICM 20	1	X	X	X	X	X	X	X	X
08-04		1377.448	Service kit, gaskets/O-rings f. ICM 25	1	X	X	X	X	X	X	X	X
08-04		1377.449	Service kit, gaskets/O-rings f. ICM 32	1	X	X	X	X	X	X	X	X
08-04		1377.453	Manual magnet tool f. ICM 20-32	1	X	X	X	X	X	X	X	X
08-05	P172/ 175	SPEC	Application-specific or customized (j)	3	X	X	X	X	X	X	X	X
08-06	PI	SPEC	Application-specific or customized (j)	1	X	X	X	X	X	X	X	X
08-07	YY-9	951A0053H01	Solenoid 3-way valve PE (excl. coil)	1	X	X	X	X	X	X	X	X
08-07		951A0095H01	Coil 11W 120V 50/60Hz	1	X	X	X	X	X	X	X	X
08-07		951A0095H02	Coil 11W 240V 50/60Hz	1	X	X	X	X	X	X	X	X
08-08		SPEC	Application-specific or customized (j)	1	X	X	X	X	X	X	X	X
08-09		SPEC	Application-specific or customized (j)	1	X	X	X	X	X	X	X	X
J) Spare parts kits and sets for stop valve in fig.9												
j) Contact Refrigeration Parts Centre for more information												
o) If liquid injection flow max. 8.6 kg/min												
p) If liquid injection flow max. 15.6 kg/min												
q) If liquid injection flow max. 25.9 kg/min												
r) If liquid injection flow max. 57.6 kg/min												
s) If liquid injection flow max. 227 kg/min												
t) If liquid injection, single flow												
u) If liquid injection, dual flow												

1.1.11 Suction/discharge/service/stop valve, typical

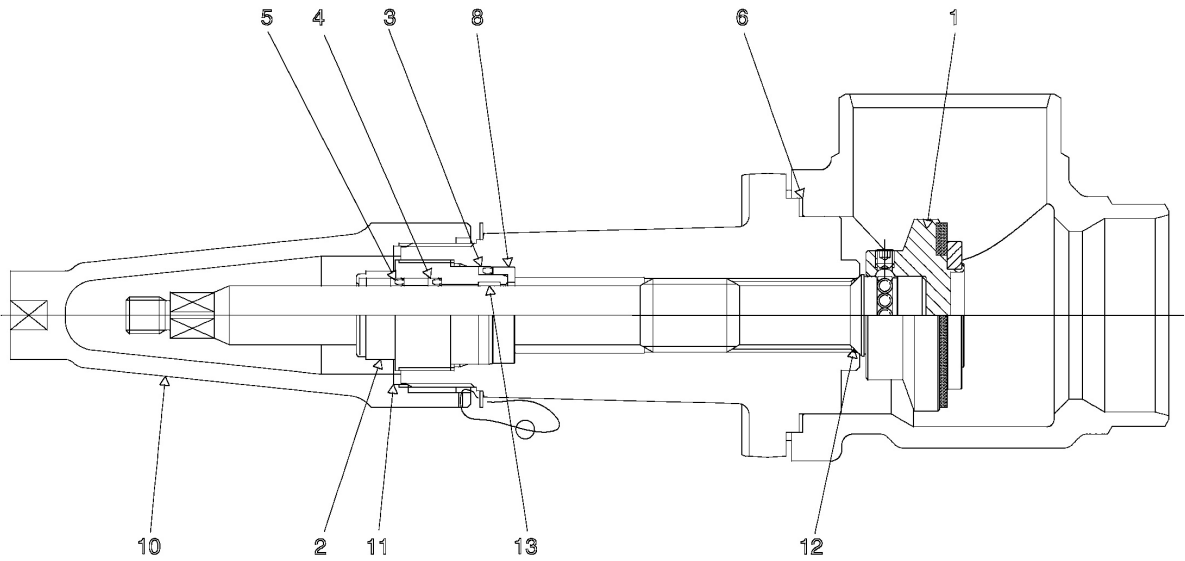


Fig. 9: Drawing for list 09

List 09

Fig-Index	P&I Ref.	Item number	Description	Qty.	SAB120S	SAB120M	SAB120L	SAB120E	SAB151S	SAB151M	SAB151L	SAB151E
09-		-	Suction/discharge/service stop valve (See chart below)	1	X	X	X	X	X	X	X	X
09-01		-	Cone and cone seal	(k)	X	X	X	X	X	X	X	X
09-02		-	Packing gland	(k)	X	X	X	X	X	X	X	X
09-03		-	Packing washer	(k)	X	X	X	X	X	X	X	X
09-04		-	O-ring	(k)	X	X	X	X	X	X	X	X
09-05		-	O-ring	(k)	X	X	X	X	X	X	X	X
09-06		-	Gasket	(k)	X	X	X	X	X	X	X	X
09-07		UI	Unused index									
09-08		-	Washer	(k)	X	X	X	X	X	X	X	X
09-09		UI	Unused index									
09-10		-	Cap	(k)	X	X	X	X	X	X	X	X
09-11		-	Gasket for cap	(k)	X	X	X	X	X	X	X	X
09-12		-	Soft backseat	(k)	X	X	X	X	X	X	X	X
09-13		-	Wear ring	(k)	X	X	X	X	X	X	X	X

k) Quantity as required for one valve in the actual kit

1.1.12 Spare parts list for all suction/discharge/service/stop valves

Item Number	Description	Repair kit (a)	Kit, Packing gland (b)	Kit, Cap incl. gasket (c)
1364.325	Reg. valve, Ang., Sc., REG 40 #10	2453.044	1377.249	1365.098
1361.117	Stop valve, Ang., Sc., SNV-ST CD10	(d)	(d)	(d)
1361.052	Stop valve, Ang., Sc., SVA-ST 15	1377.417	1377.273	1365.096
1361.078	Stop valve, Str., Sc., SVA-ST 15	1377.417	1377.273	1365.096
1361.053	Stop valve, Ang., Sc., SVA-ST 20	1377.417	1377.273	1365.097
1361.079	Stop valve, Str., Sc., SVA-ST 20	1377.417	1377.273	1365.097
1361.054	Stop valve, Ang., Sc., SVA-ST 25	1377.418	1377.249	1365.098
1361.067	Stop valve, Str., Sc., SVA-ST 25	1377.418	1377.249	1365.098
1361.055	Stop valve, Ang., Sc., SVA-ST 32	1377.418	1377.249	1365.098
1361.064	Stop valve, Str., Sc., SVA-ST 32	1377.418	1377.249	1365.098
1361.056	Stop valve, Ang., Sc., SVA-ST 40	1377.418	1377.249	1365.098
1361.065	Stop valve, Str., Sc., SVA-ST 40	1377.418	1377.249	1365.098
1361.057	Stop valve, Ang., Sc., SVA-ST 50	1377.419	1377.274	1365.098
1361.066	Stop valve, Str., Sc., SVA-ST 50	1377.419	1377.274	1365.098
1361.063	Stop valve, Ang., Sc., SVA-ST 65	1377.420	1377.274	1365.098
1361.068	Stop valve, Str., Sc., SVA-ST 65	1377.420	1377.274	1365.098
1361.073	Stop valve, Ang., Sc., SVA-ST 80	1377.421	1377.279	1365.099
1361.074	Stop valve, Ang., Sc., SVA-ST 100	1377.422	1377.279	1365.099
1361.075	Stop valve, Ang., Sc., SVA-ST 125	1377.423	1377.282	1365.100
1361.076	Stop valve, Ang., Sc., SVA-ST 150	1377.424	1377.282	1365.100
1361.077	Stop valve, Ang., Sc., SVA-ST 200	1377.425	1377.283	1365.101
1361.108	Stop valve, Ang., Sc., SVA-DH 250	1377.285	1377.284	1365.115
1361.135	Stop valve, Ang., Sc., SVA-DH 300	1377.286	1377.284	1365.115
a) SVA-ST consists of: Cone complete including screw and steel balls, packing gland including gaskets and all other necessary gaskets (Index 1-6/11-12).				
SVA-DH consists of: Cone wear ring including gaskets, packing gland including gaskets and all other necessary gaskets (Index 1-6/11-12).				
b) Consists of packing gland including gaskets (Index 2-5).				
c) Consists of cap with gasket (Index 10/11).				
d) No spare parts available (tighten packing gland or replace all with a new valve).				

1.1.13 Discharge stop/check valve - SAB 120, SAB 151 and SAB 193

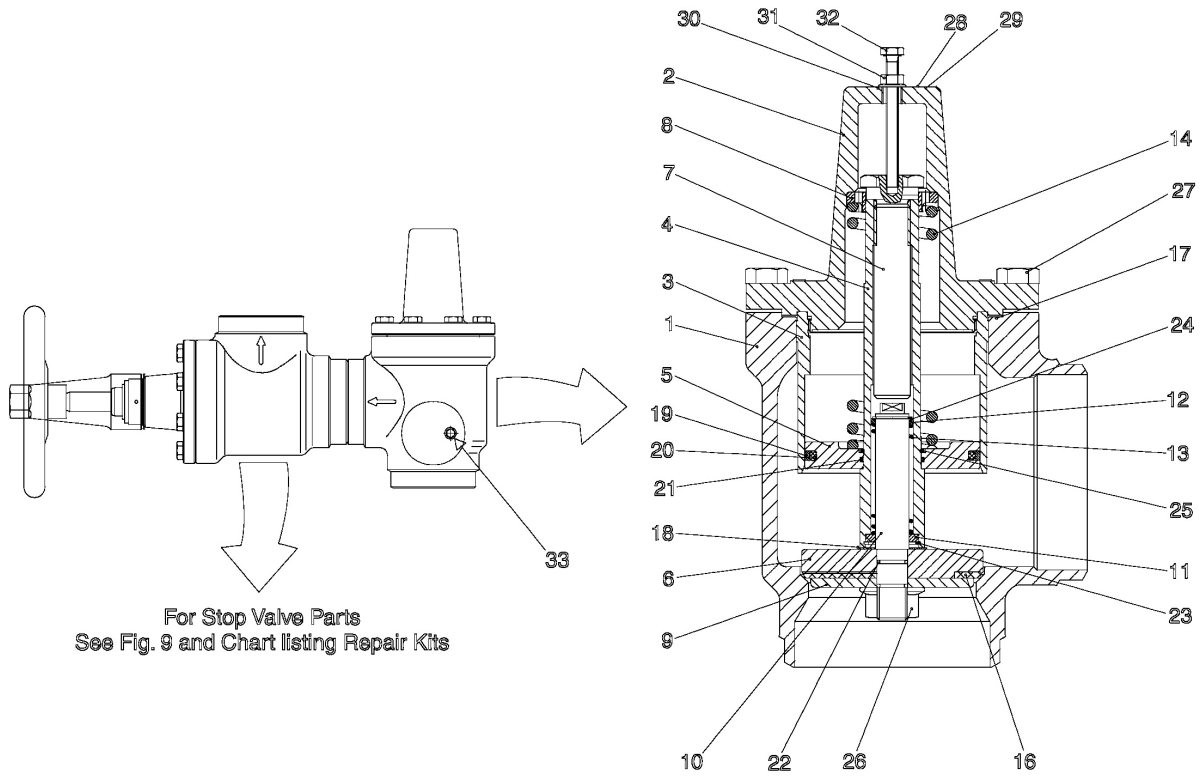


Fig. 10: Drawing for list 10

1.1.14 Spare parts list for check valve

Item number	Description	Bonnet gasket (fig. 10-17)	Seal kit (e)	Spring kit 0.5 bar (f)	Spring kit 2 bar (f)
1372.574	Check valve, Ang., GVD 80 (T)	956A0044H11	956A0044H12	N/A	956A0044H14
1372.589	Check valve, Ang., GVD 100 (T)	956A0045H11	956A0045H12	N/A	956A0045H14
956A0044H02	Check valve, Ang., GVD 80 (U)	956A0044H11	956A0044H12	956A0044H13	N/A
956A0045H02	Check valve, Ang., GVD 100 (U)	956A0045H11	956A0045H12	956A0045H13	N/A
T) Only at high stage operating mode					
U) Only at Booster operating mode					
e) Consists of gasket and various rings (Index 16-22)					
f) Consists of plate, rivet and spring (Index 14/28-29)					

List 10

Fig-Index	P&I Ref.	Item number	Description	Qty.	SAB120S	SAB120M	SAB120L	SAB120E	SAB151S	SAB151M	SAB151L	SAB151E
10-		-	Assembly, discharge stop/check valve (Item no. see Fig-Index 01-07) Spare parts for: -stop valve, see fig.9 - check valve, see chart previous page	1	X	X	X	X	X	X	X	X
10-01		-	Housing	1	X	X	X	X	X	X	X	X
10-02		-	Bonnet	1	X	X	X	X	X	X	X	X
10-03		-	Piston cylinder	1	X	X	X	X	X	X	X	X
10-04		-	Piston rod	1	X	X	X	X	X	X	X	X
10-05		-	Piston	1	X	X	X	X	X	X	X	X
10-06		-	Cone	1	X	X	X	X	X	X	X	X
10-07		-	Spring screw	1	X	X	X	X	X	X	X	X
10-08		-	Spring bushing	1	X	X	X	X	X	X	X	X
10-09		-	Cone plate	1	X	X	X	X	X	X	X	X
10-10		-	Cone rod	1	X	X	X	X	X	X	X	X
10-11		-	Rear bushing	1	X	X	X	X	X	X	X	X
10-12		-	Front bushing	1	X	X	X	X	X	X	X	X
10-13		-	Spring	1	X	X	X	X	X	X	X	X
10-14		-	Spring (f)	1	X	X	X	X	X	X	X	X
10-15		-	Plug (not shown)	1	X	X	X	X	X	X	X	X
10-16		-	Teflon ring (e)	1	X	X	X	X	X	X	X	X
10-17		-	Bonnet gasket (e)	1	X	X	X	X	X	X	X	X
10-18		-	Nylon washer (e)	1	X	X	X	X	X	X	X	X
10-19		-	Glyde ring (e)	1	X	X	X	X	X	X	X	X
10-20		-	O-ring (e)	1	X	X	X	X	X	X	X	X
10-21		-	O-ring (e)	1	X	X	X	X	X	X	X	X
10-22		-	O-ring (e)	1	X	X	X	X	X	X	X	X
10-23		-	Spring ring	1	X	X	X	X	X	X	X	X
10-24		-	Spring ring	1	X	X	X	X	X	X	X	X
10-25		-	Spring ring	1	X	X	X	X	X	X	X	X
10-26		-	Nut	1	X	X	X	X	X	X	X	X
10-27		-	Set screw (O)	0	X	X	X	X	X	X	X	X
10-28		-	Marking plate (f)	1	X	X	X	X	X	X	X	X
10-29		-	Rivet (f)	1	X	X	X	X	X	X	X	X
10-30		-	Washer	1	X	X	X	X	X	X	X	X
10-31		-	Nut	1	X	X	X	X	X	X	X	X
10-32		-	Screw	1	X	X	X	X	X	X	X	X
10-33	P107	1361.117	Stop valve, Ang., Sc., SNV-ST CD10 (J)	1	X	X	X	X	X	X	X	X
J) Spare parts kits and sets for stop valve in fig.9												
O) Quantity as required (may be suggested)												
e) Consists of gasket and various rings (Index 16-22)												
f) Consists of plate, rivet and spring (Index 14/28-29)												

List 11 is not applicable for this part list

Fig. 11: There is no drawing to list 11

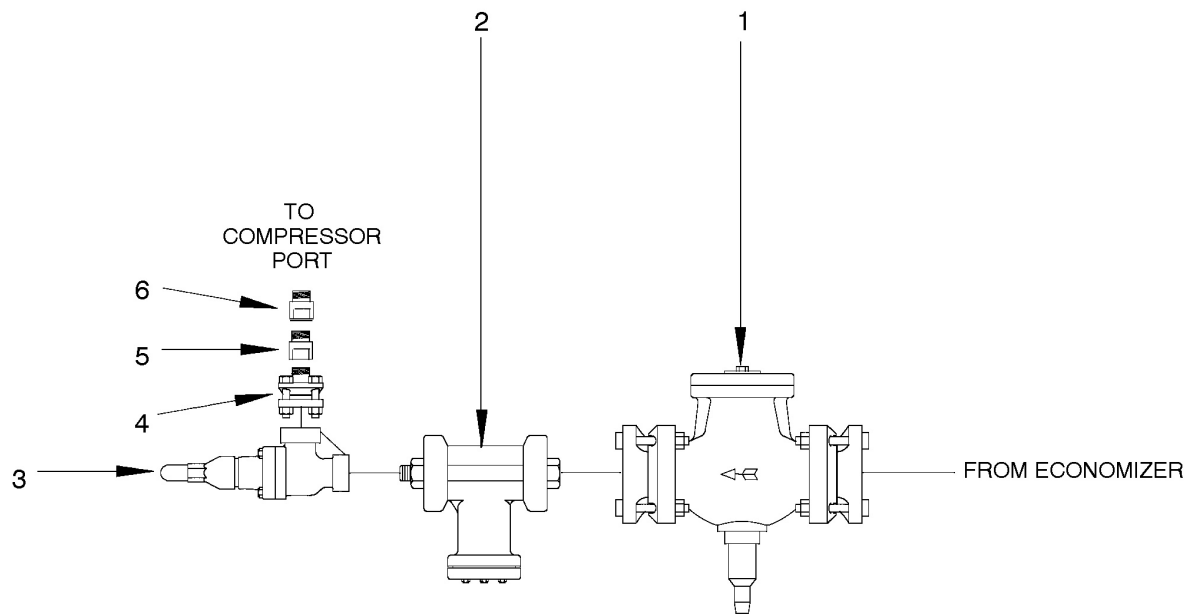
1.1.15 Economizer

Fig. 12: Drawing for list 12

List 12

Fig-Index	P&I Ref.	Item number	Description	Qty.	SAB120S	SAB120M	SAB120L	SAB120E	SAB151S	SAB151M	SAB151L	SAB151E
12-		535B0056G02EU	Kit, Economizer connection system	1	X	X	X	X				
12-		535B0056G03EU	Kit, Economizer connection system	1					X	X		
12-		535B0056G04EU	Kit, Economizer connection system	1							X	X
12-01	CV-3	956A0025H28EU	Check valve, Str., 1-1/4", modified	1	X	X	X	X	X	X		
12-01	CV-3	956A0025H23EU	Check valve, Str., 1-1/2", modified	1							X	X
12-01		959A0057H04	Gasket OD=2-5/16"	2	X	X	X	X	X	X		
12-01		959A0057H05	Gasket OD=2-3/4"	2							X	X
12-02	STR-5	950A0001H05EU	Strainer 1-1/4", flange size 1-1/4"	1	X	X	X	X	X	X		
12-02	STR-5	950A0001H08EU	Strainer 2", flange size 1-1/2"	1							X	X
12-02		950A0001H24	Kit for 1-1/4" strainer (V)	1	X	X	X	X	X	X		
12-02		950A0001H27	Kit for 2" strainer (V)	1							X	X
12-02		950A0001H39	Screen gasket f. 1-1/4" strainer	1	X	X	X	X	X	X		
12-02		950A0001H40	Screen gasket f. 2" strainer	1							X	X
12-02		950A0001H33	Flange gasket f. 1-1/4" strainer	2	X	X	X	X	X	X		
12-02		950A0001H34	Flange gasket f. 1-1/2" and 2" strainer	2							X	X
12-03	P141	1361.055	Stop valve, Ang., Sc., SVA-ST 32 (J)	1	X	X	X	X	X	X		
12-03	P141	1361.056	Stop valve, Ang., Sc., SVA-ST 40 (J)	1							X	X
12-04		1349.296	Connector, butt weld ø46 - tube end ø42	1	X	X	X	X				
12-04		2334.031	Pipe reducer, DN 32 - ø42	1					X	X		
12-04		1356.028	Pipe reducer, DN 40 - DN 32	1							X	X
12-05		1349.391	Swivel reducer, ø42 - ø35	1	X	X	X	X				
12-05		2334.031	Pipe reducer, DN 32 - ø42	1							X	X
12-06		1349.390	Connector, tube end ø35 - 1 7/8-12 UN	1	X	X	X	X				
12-06		1349.384	Connector, tube end ø42 - 1 7/8-12 UN	1					X	X	X	X
J) Spare parts kits and sets for stop valve in fig.9												
V) Consists of screen, spring and screen gasket												

1.1.16 Oil pump

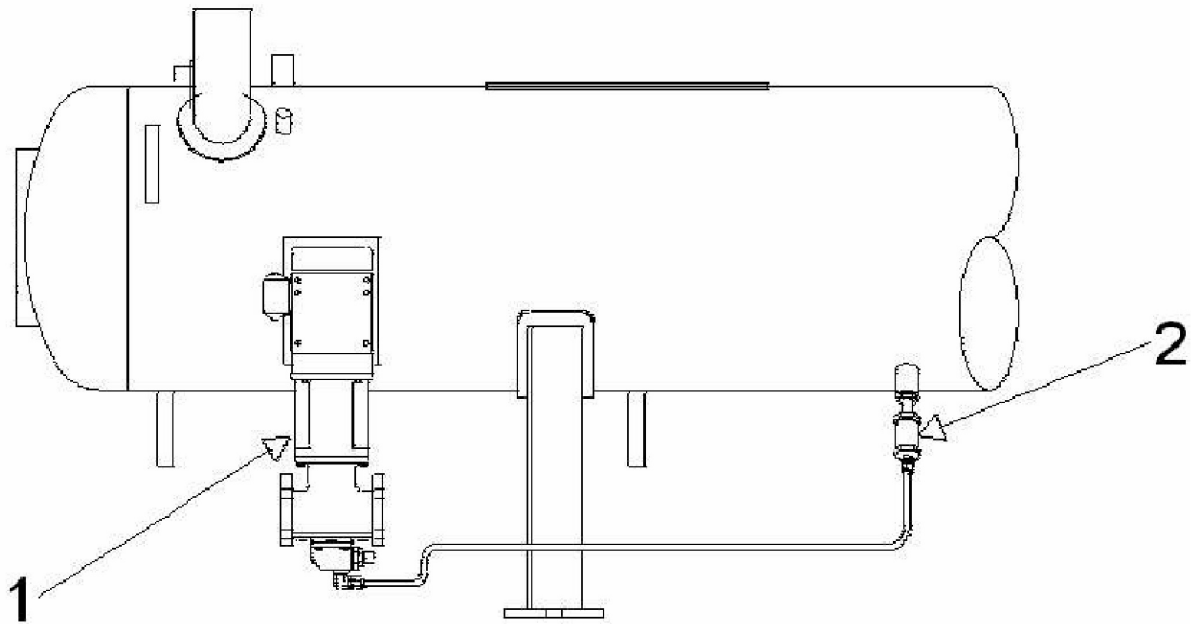


Fig. 13: Drawing for list 13

List 13

Fig-Index	P&I Ref.	Item number	Description	Qty.	SAB120S	SAB120M	SAB120L	SAB120E	SAB151S	SAB151M	SAB151L	SAB151E
13-01	P/PM-1	960A0090G01	Ass., oil pump, 1 hp 3x400/460V 50/60Hz	1	X	X	X	X				
13-01		960A0090H01	Pump only (f. 1 hp)	1	X	X	X	X				
13-01		914A0015H01	Motor only (f. 1 hp)	1	X	X	X	X				
13-01		960A0068H11	Coupling only (f. 1 hp)	1	X	X	X	X				
13-01	P/PM-1	960A0082G01	Ass., oil pump, 1 hp 3x400/460V 50/60Hz	1					X	X	X	X
13-01		960A0082H01	Pump only (f. 1&1-1/2 hp)	1					X	X	X	X
13-01		914A0015H02	Motor only (f. 1&1-1/2 hp)	1					X	X	X	X
13-01		960A0066H11	Coupling only (f. 1&1-1/2 hp)	1					X	X	X	X
13-01		960A0075H41	Kit, shaft seal f. pump, 1 hp (N)	1	X	X	X	X				
13-01		960A0076H41	Kit, shaft seal f. pump, 1-3 hp (N)	1					X	X	X	X
13-02	CV-3	956A0014H01	Check valve, Str., 3/4"	1	X	X	X	X	X	X	X	X
N) Consists of shaft seal, O-ring, bearings and locknut												

1.1.17 Coupling assembly

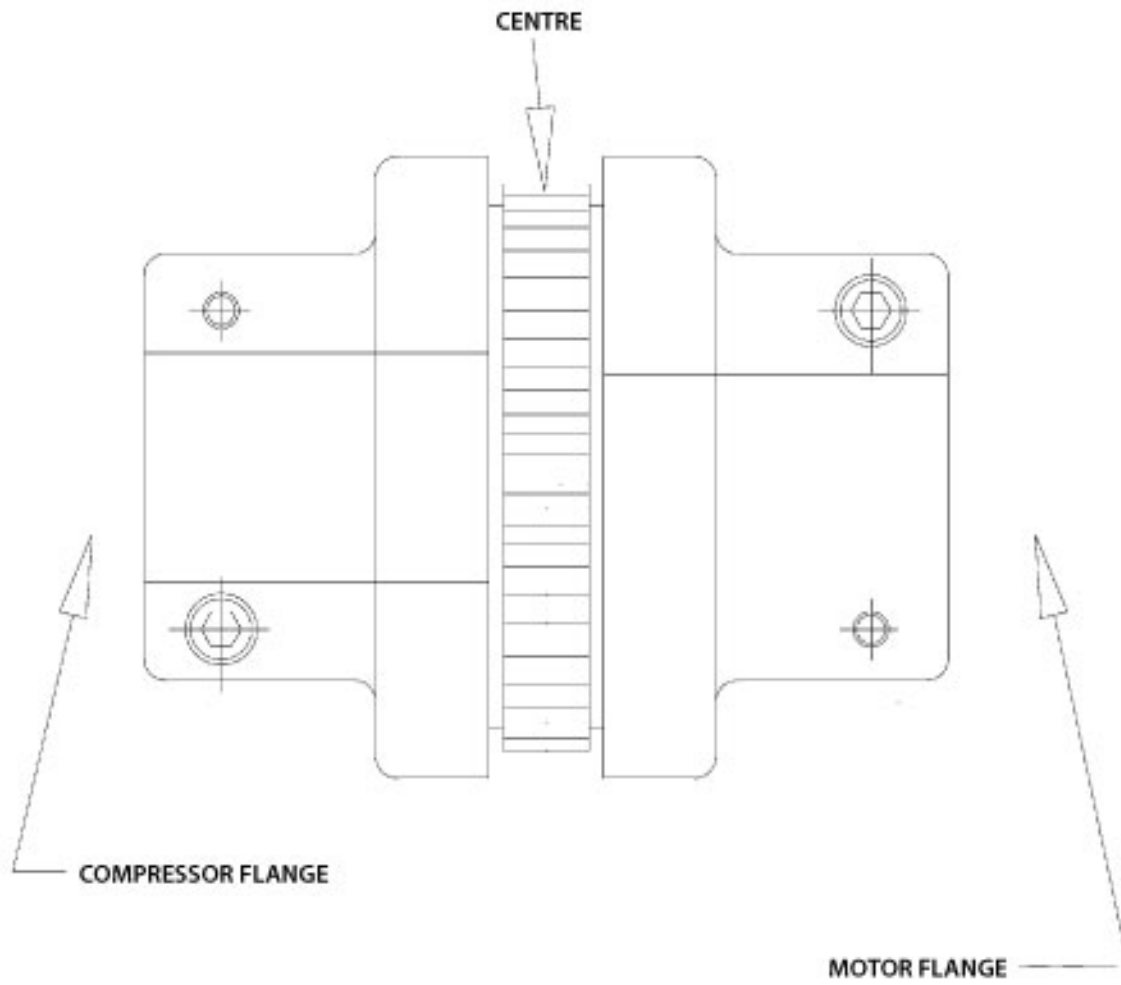


Fig. 14: Drawing for list 14

List 14

Fig-Index	P&I Ref.	Item number	Description	Qty.	SAB120S	SAB120M	SAB120L	SAB120E	SAB151S	SAB151M	SAB151L	SAB151E
14-		1524.L02	Ass., Coupling 8C, ø55 & 1.575" (g)	1	X	X	X	X				
14-		1524.L03	Ass., Coupling 9C, ø60 & 1.575" (g)	1	X	X	X	X				
14-		1524.L04	Ass., Coupling 9C, ø65 & 1.575" (g)	1	X	X	X	X				
14-		1524.L08	Ass., Coupling 10C, ø70 & 1.575" (g)	1	X	X	X	X				
14-		1524.L05	Ass., Coupling 9C, ø60 & 2.000" (g)	1					X	X	X	X
14-		1524.L06	Ass., Coupling 9C, ø65 & 2.000" (g)	1					X	X	X	X
14-		1524.L07	Ass., Coupling 10C, ø70 & 2.000" (g)	1					X	X	X	X
14-01		930A0093H01	Center for coupling size 8C	1	X	X	X	X				
14-01		930A0093H05	Center for coupling size 9C	1	X	X	X	X	X	X	X	X
14-01		930A0093H11	Center for coupling size 10C	1	X	X	X	X	X	X	X	X
g) Motor and compressor bore respectively												

List 15 is not applicable for this part list

Fig. 15: There is no drawing to list 15

1.1.18 Piping and instrumentation, typical
(showing SAB 151 L/E with single oil filter and oil cooler)

Not or partly shown: 9, 18, 19, 20, 25

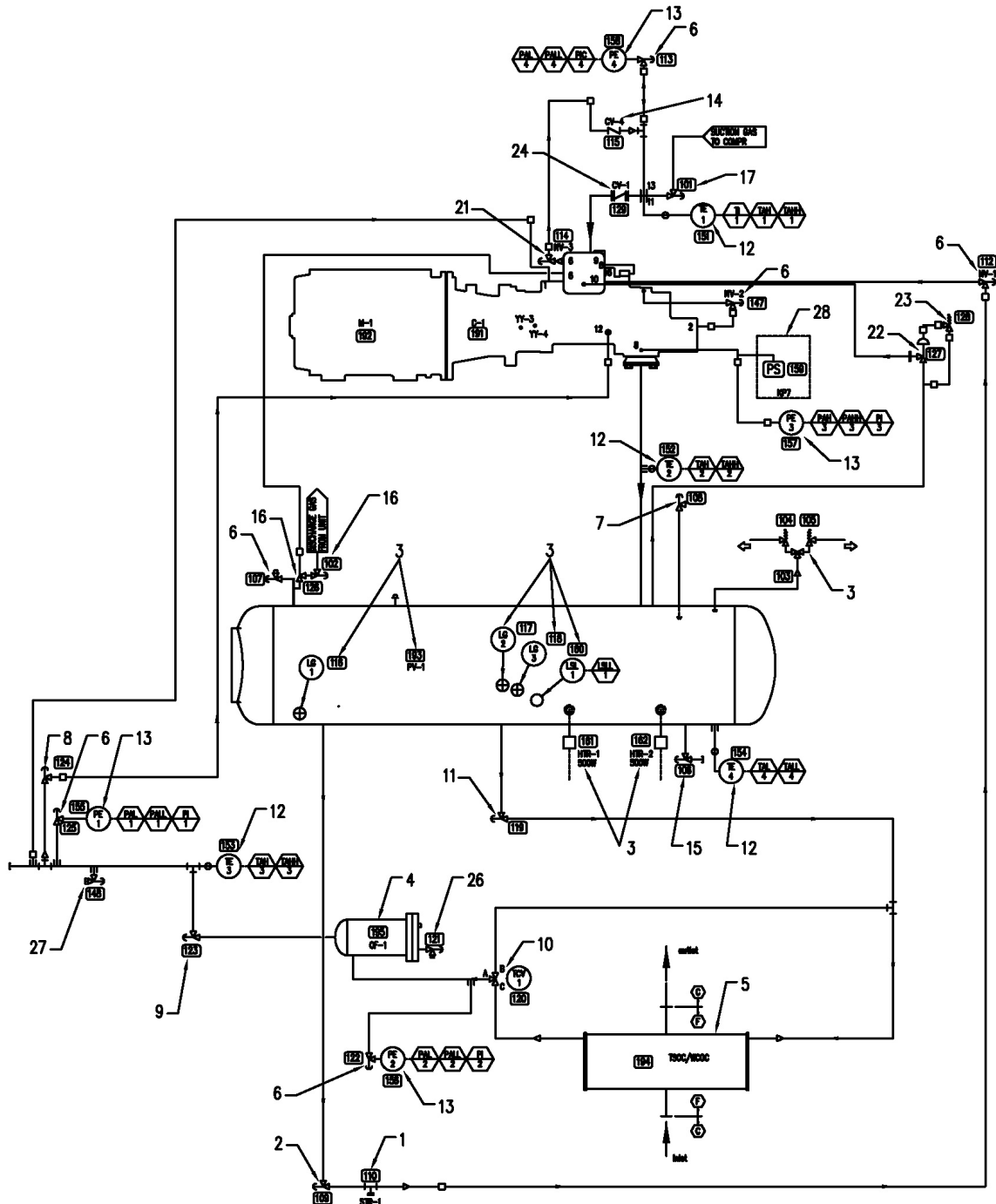


Fig. 16: Drawing for list 16

List 16

Fig-Index	P&I Ref.	Item number	Description	Qty.	SAB120S	SAB120M	SAB120L	SAB120E	SAB151S	SAB151M	SAB151L	SAB151E
16-01	STR-1	1375.154	Strainer, Str., FA 15	1	X	X	X	X	X	X	X	X
16-01		1377.250	Repair kit (strainer and gasket), FA 15	1	X	X	X	X	X	X	X	X
16-01		1377.078	Seal kit (f. cover and flange), FA 15	1	X	X	X	X	X	X	X	X
16-02	P109	1361.052	Stop valve, Ang., Sc., SVA-ST 15 (J)	1	X	X	X	X	X	X	X	X
16-03		INF	See further information for items on the oil separator in fig.3	1	X	X	X	X	X	X	X	X
16-04	OF-1	INF	See further information for single oil filter in fig.4	1	X	X	X	X	X	X	X	X
16-04	OF-1/2	INF	See further information for dual oil filter in fig.5	2					X	X	X	X
16-05	TSOC/WCOC	INF	See further information for oil cooler in fig.6	1	X	X	X	X	X	X	X	X
16-06	NV-2	1361.117	Stop valve, Ang., Sc., SNV-ST CD10 (J)	1	X	X	X	X	X	X	X	X
16-06	P107/113/ 122/125	1361.117	Stop valve, Ang., Sc., SNV-ST CD10 (J)	4	X	X	X	X	X	X	X	X
16-07	P108	1361.052	Stop valve, Ang., Sc., SVA-ST 15 (J)	1	X	X	X	X				
16-07	P108	1361.054	Stop valve, Ang., Sc., SVA-ST 25 (J)	1					X	X	X	X
16-08	P124	1364.325	Reg. valve, Ang., Sc., REG 40 #10 (J)	1					X	X	X	X
16-09	P123/135/ 136/138	INF	See further information for oil filter stop valve in Fig-Index 04-05 (single) or 05-03 (dual)	0	X	X	X	X	X	X	X	X
16-10	TCV-1	INF	See further information for temperature control valve in Fig-Index 06-07	1	X	X	X	X	X	X	X	X
16-11	P119	1361.054	Stop valve, Ang., Sc., SVA-ST 25 (J)	1	X	X	X	X				
16-11	P119	1361.056	Stop valve, Ang., Sc., SVA-ST 40 (J)(L)	1	X	X	X	X				
16-11	P119	1361.056	Stop valve, Ang., Sc., SVA-ST 40 (J)	1					X	X	X	X
16-12	TE-1/3	1373.325	Temperature sensor including pocket, L=130	2	X	X	X	X	X	X	X	X
16-12	TE-2	1373.319	Temperature sensor including pocket, L=80	1	X	X	X	X	X	X	X	X
16-12	TE-4	1373.326	Temperature sensor including pocket, L=95	1	X	X	X	X	X	X	X	X
16-12	TE-1/2/3/4	1349.135	Seal ring, bonded, for G 1/4 A (H) (for pocket sealing purpose)	1	X	X	X	X	X	X	X	X
16-13	PE-1/2/3	1373.340	Pressure transducer, -1/25 bar (AC)	3	X	X	X	X	X	X	X	X
16-13	PE-1/2/3	1373.338	Pressure transducer, -1/25 bar (Z) (AD) 4-20 mA / 24 VDC	3	X	X	X	X	X	X	X	X
16-13	PE-4	1373.339	Pressure transducer, -1/9 bar (AC)	1	X	X	X	X	X	X	X	X
16-13	PE-4	1373.337	Pressure transducer, -1/9 bar (Z) (AD) 4-20 mA / 24 VDC	1	X	X	X	X	X	X	X	X

Fig-Index	P&I Ref.	Item number	Description	Qty.	SAB120S	SAB120M	SAB120L	SAB120E	SAB151S	SAB151M	SAB151L	SAB151E
16-14	CV-4	1364.022	Check valve, Str., 3 bar, ø10-G 1/4 A (T)	1	X	X	X	X	X	X	X	X
16-14	CV-4	1364.404	Check valve, Str., 1 bar, ø10-G 1/4 A (U)	1	X	X	X	X	X	X	X	X
16-15	P106	1361.053	Stop valve, Ang., Sc., SVA-ST 20 (J)	1	X	X	X	X				
16-15	P106	1361.054	Stop valve, Ang., Sc., SVA-ST 25 (J)	1					X	X	X	X
16-16	P102/126	INF	See further information for discharge stop and check valves in Fig-Index 01-07	1	X	X	X	X	X	X	X	X
16-17	P101	INF	See further information for suction stop valve in Fig-Index 01-06	1	X	X	X	X	X	X	X	X
16-18	CV-3	956A 0014H01	Check valve, Str., 3/4" (L)	1	X	X	X	X	X	X	X	X
16-19	STR-2	INF	See further information for strainer in Fig-Index 06-02 (L)	1	X	X	X	X	X	X	X	X
16-20	CV-2	INF	See further information for check valve in Fig-Index 06-03 (L)	1	X	X	X	X	X	X	X	X
16-21	NV-3	1361.117	Stop valve, Ang., Sc., SNV-ST CD10 (J)	1	X	X	X	X	X	X	X	X
16-22	P127	2417.232	Safety valve POV 40	1	X	X	X	X	X	X		
16-22	P127	1364.348	Safety valve POV 1050	1							X	X
16-22		2356.220	Gasket ring ø 75/61 x 2.0	1	X	X	X	X	X	X	X	X
16-23	P128	2416.203	Safety valve BSV 8, 20 bar g	1	X	X	X	X	X	X	X	X
16-23	P128	2416.224	Safety valve BSV 8, 22 bar g	1	X	X	X	X	X	X	X	X
16-23	P128	2416.315	Safety valve BSV 8, 24 bar g	1	X	X	X	X	X	X	X	X
16-23		2356.127	Gasket, Aluminium ø24/13 x 1.5	1	X	X	X	X	X	X	X	X
16-23		2356.137	Gasket, Aluminium ø30/16 x 1.5	1	X	X	X	X	X	X	X	X
16-24	CV-1	INF	See further information for suction check valve in Fig-Index 02-01	1	X	X	X	X	X	X	X	X
16-25	P/PM-1	INF	See further information for oil pump in fig.13 (L)	1	X	X	X	X	X	X	X	X
16-26	P121/137	1361.117	Stop valve, Ang., Sc., SNV-ST CD10 (J) (K)	1					X	X	X	X
16-27	P148	1361.117	Stop valve, Ang., Sc., SNV-ST CD10 (J)	1					X	X	X	X
16-28	P159	1373.132	High pressure cut-off	1	X	X	X	X	X	X	X	X

H) Quantity is for each sealing purpose

J) Spare parts kits and sets for stop valve in fig.9

K) Quantity is for each oil filter

L) Only if with oil pump

T) Only at high stage operating mode

U) Only at Booster operating mode

Z) For package without Unisab II control only

AC) For package with Unisab II control only

AD) For package with Unisab III control only

1.1.19 Compressor ports locations

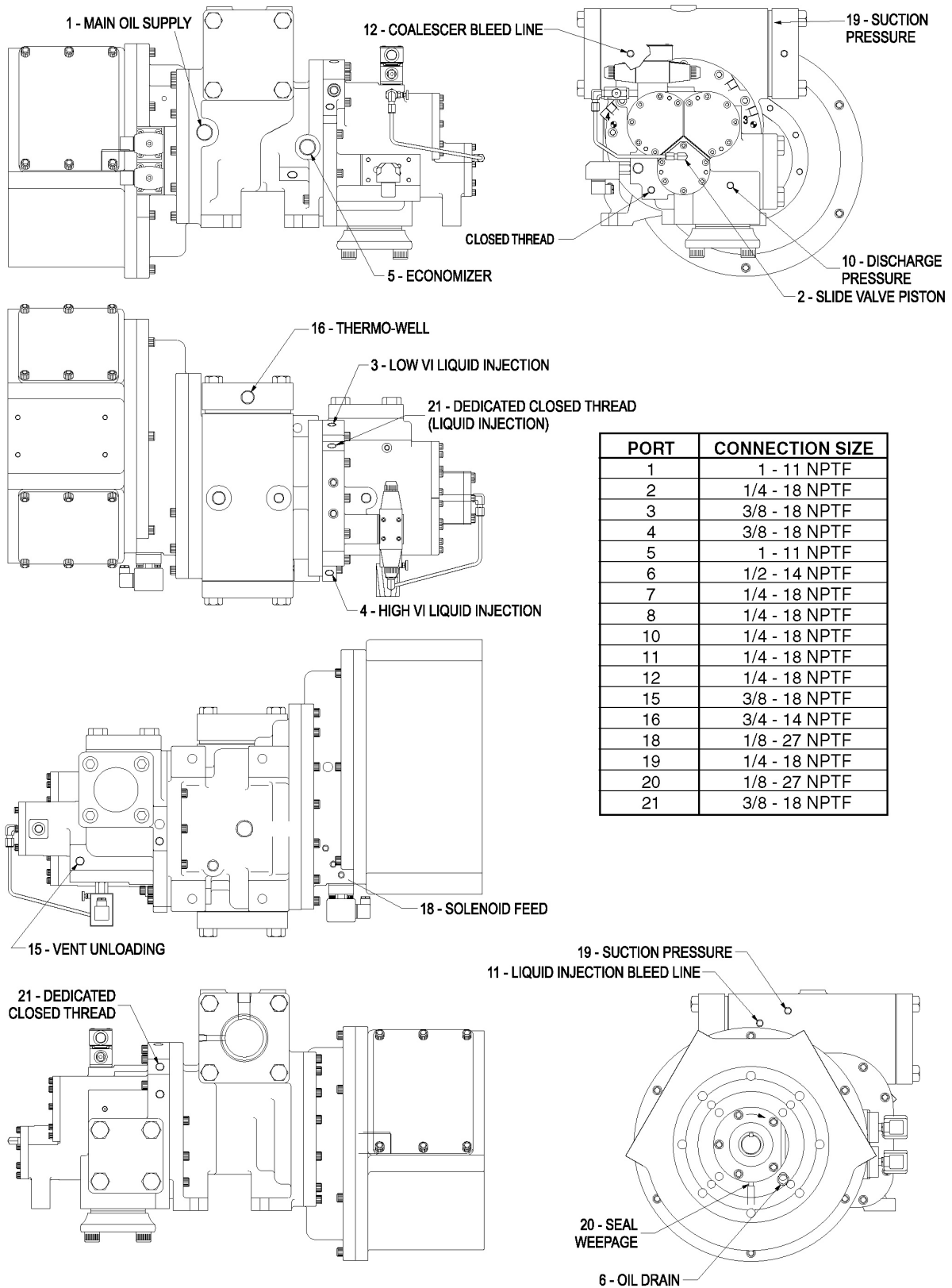


Fig. 17: RXF 24-50 (SAB 120 S/M/L/E)

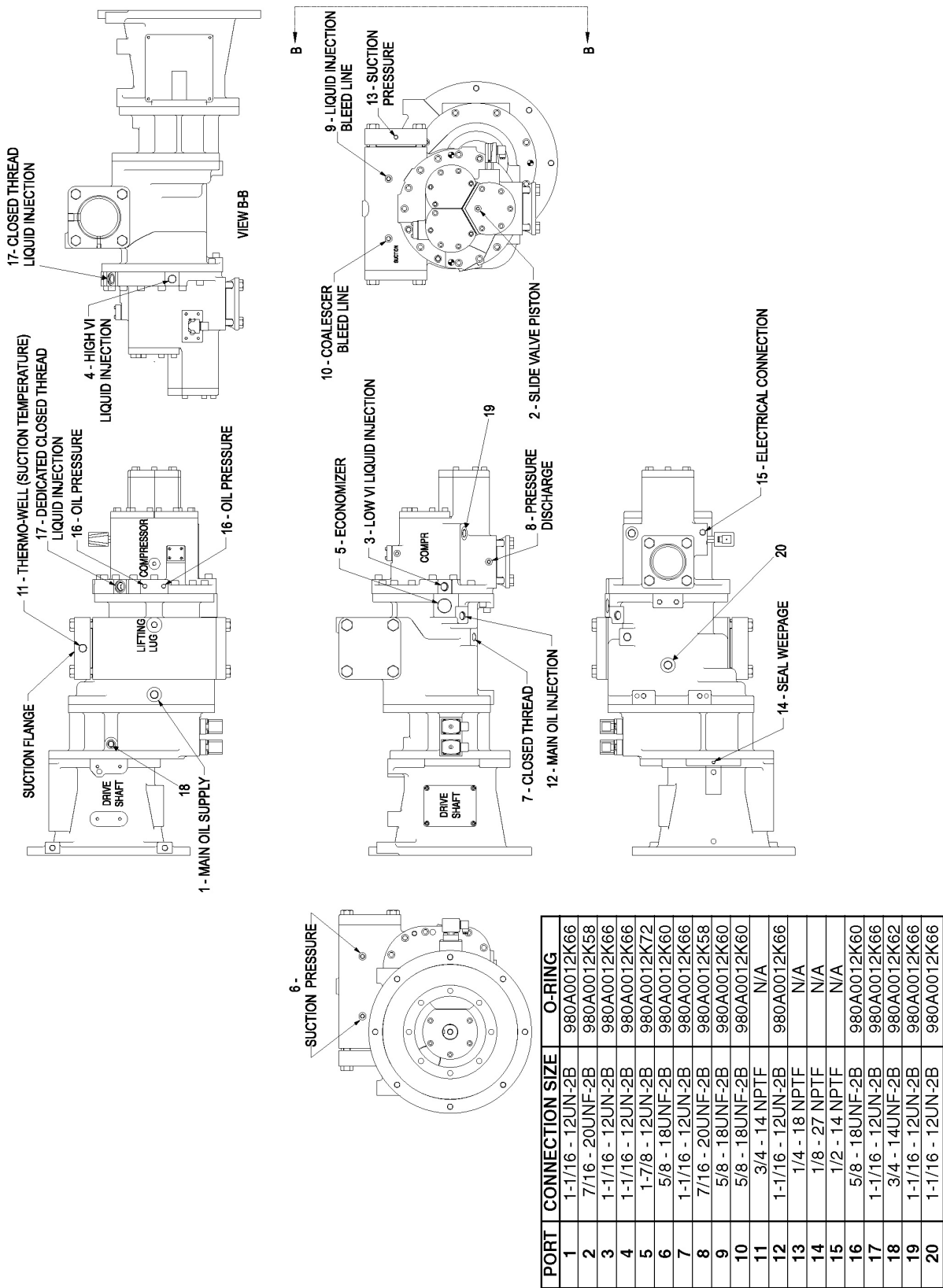


Fig. 18: RXF 58-101 (SAB 151 S/M/L/E)

2. Numerical parts list

2.1.1 Parts list

Item number	Fig - Index
1226.014	03-02
1331.604	00-01
1331.604	03-01
1331.605	00-01
1331.605	03-01
1336.029	08-03
1344.369	06-04
1344.373	06-04
1349.135	00-03
1349.135	03-06
1349.135	16-12
1349.248	00-10
1349.248	03-05
1349.296	12-04
1349.384	12-06
1349.390	12-06
1349.391	12-05
1356.028	12-04
1361.052	03-16
1361.052	09-
1361.052	16-02
1361.052	16-07
1361.053	03-17
1361.053	08-01
1361.053	09-
1361.053	16-15
1361.054	03-16
1361.054	03-17
1361.054	06-01
1361.054	08-01
1361.054	09-
1361.054	16-07
1361.054	16-11
1361.054	16-15
1361.055	08-01
1361.055	09-
1361.055	12-03
1361.056	04-05
1361.056	05-03
1361.056	06-01
1361.056	09-
1361.056	12-03
1361.056	16-11
1361.057	09-
1361.063	09-
1361.064	08-01
1361.064	09-

Item number	Fig - Index
1361.065	08-02
1361.065	09-
1361.066	09-
1361.067	08-01
1361.067	08-02
1361.067	09-
1361.068	09-
1361.073	01-06
1361.073	01-07
1361.073	09-
1361.074	01-06
1361.074	01-07
1361.074	09-
1361.075	01-06
1361.075	09-
1361.076	01-06
1361.076	09-
1361.077	09-
1361.078	08-02
1361.078	09-
1361.079	08-01
1361.079	08-02
1361.079	09-
1361.108	09-
1361.117	02-13
1361.117	04-06
1361.117	04-08
1361.117	04-16
1361.117	05-02
1361.117	05-05
1361.117	05-06
1361.117	06-08
1361.117	09-
1361.117	10-33
1361.117	16-06
1361.117	16-21
1361.117	16-26
1361.117	16-27
1361.135	09-
1364.022	16-14
1364.325	04-07
1364.325	05-04
1364.325	09-
1364.325	16-08
1364.348	16-22
1364.349	03-07
1364.361	03-07
1364.363	03-07
1364.371	03-07
1364.404	16-14
1364.409	02-01
1364.410	02-01

Item number	Fig - Index
1365.096	09-
1365.097	09-
1365.098	09-
1365.099	09-
1365.100	09-
1365.101	09-
1365.115	09-
1372.039	08-03
1372.347	08-03
1372.348	08-03
1372.349	08-03
1372.395	08-03
1372.537	00-07
1372.537	08-03
1372.538	00-07
1372.538	08-03
1372.545	02-03
1372.574	01-07
1372.574	10-
1372.589	01-07
1372.589	10-
1373.132	02-10
1373.132	16-28
1373.319	00-03
1373.319	03-06
1373.319	16-12
1373.325	00-03
1373.325	16-12
1373.326	00-03
1373.326	03-06
1373.326	16-12
1373-337	00-04
1373-337	01-06
1373-337	16-13
1373-338	00-04
1373-338	02-11
1373-338	16-13
1373-339	00-04
1373-339	01-06
1373-339	16-13
1373-340	00-04
1373-340	02-11
1373-340	16-13
1375.076	08-03
1375.078	08-03
1375.082	08-03
1375.116	06-07
1375.154	16-01
1375.157	06-07
1375.158	06-07
1375.173	08-03
1375.174	08-03

Item number	Fig - Index
1377.078	08-03
1377.078	16-01
1377.079	08-03
1377.249	09-
1377.250	08-03
1377.250	16-01
1377.251	08-03
1377.255	03-07
1377.257	03-07
1377.259	03-07
1377.262	08-03
1377.263	08-03
1377.268	08-03
1377.273	09-
1377.274	09-
1377.279	09-
1377.282	09-
1377.283	09-
1377.284	09-
1377.285	09-
1377.286	09-
1377.417	09-
1377.418	09-
1377.419	09-
1377.420	09-
1377.421	09-
1377.422	09-
1377.423	09-
1377.424	09-
1377.425	09-
1377.438	00-03
1377.441	00-03
1377.442	00-03
1377.447	08-04
1377.448	08-04
1377.449	08-04
1377.453	08-04
1379.014	08-04
1423.014	03-14
1436.075	03-13
1524.L02	14-
1524.L03	14-
1524.L04	14-
1524.L05	14-
1524.L06	14-
1524.L07	14-
1524.L08	14-
1553.422	00-10
1553.422	03-05
1553.423	00-10
1553.423	03-05
1554.159	02-03

Item number	Fig - Index
1952.084	06- R
1952.085	06- W
1952.086	06- R
1952.087	06- W
2334.031	12-04
2334.031	12-05
2356.127	16-23
2356.137	16-23
2356.144	03-02
2356.272	03-15
2416.203	16-23
2416.224	16-23
2416.315	16-23
2416.L19	03-07
2417.232	16-22
2418.001	06-07
2453.044	09-
2511.022	08-03
3440.L03	04-
3449.K08	08-
3449.K09	08-
3449.K10	08-
531A0224H02	00-02
531A0224H02	04-02
531B0099H01	00-01
531B0099H01	03-08
531B0099H02	00-01
531B0099H02	03-08
534B1088H01	02-05
534B1092H01	02-06
534E0305G01	02-
534E0305G02	02-
534E0305G03	02-
534E0305G04	02-
534E0533G01	02-
534E0533G02	02-
534E0533G03	02-
534E0533G04	02-
535A0378H01	04-04
535B0056G02EU	12-
535B0056G03EU	12-
535B0056G04EU	12-
535C0513EU	04-01
535C0513EU	05-01
540D0217G02EU	03-10
540D0217G03EU	03-11
548A0068G01EU	03-11
548E0398EU	03-
548E0399EU	03-
548E0400EU	03-
720D0408G01EU	05-
720D0409G01EU	04-

Item number	Fig - Index
720M0213G01EU	00-02
720M0366G01EU	00-02
720M0375G01EU	05-
720M0376G01EU	04-
901A0172H01EU	06-06
901A0172H03EU	06-06
902A0021H01	03-12
913A0092G01	00-05
913A0092G01	03-04
913A0092G03	00-05
913A0092G03	03-04
914A0015H01	13-01
914A0015H02	13-01
930A0093H01	14-01
930A0093H05	14-01
930A0093H11	14-01
950A0001H04EU	06-02
950A0001H05EU	12-02
950A0001H08EU	06-02
950A0001H08EU	12-02
950A0001H23	06-02
950A0001H24	12-02
950A0001H27	06-02
950A0001H27	12-02
950A0001H32	06-02
950A0001H33	12-02
950A0001H34	06-02
950A0001H34	12-02
950A0001H39	06-02
950A0001H39	12-02
950A0001H40	06-02
950A0001H40	12-02
950A0293H01	00-09
950A0293H01	02-03
950A0293H02	00-09
950A0293H02	02-03
950A0294H11	06-07
951A0053H01	08-07
951A0095H01	00-08
951A0095H01	00-09
951A0095H01	02-03
951A0095H01	08-07
951A0095H02	00-08
951A0095H02	00-09
951A0095H02	02-03
951A0095H02	08-07
951A0113H20	00-06
951A0113H20	02-09
951A0114H01	00-06
951A0114H01	02-08
951A0114H02	00-06
951A0114H02	02-08

Item number	Fig - Index
951A0114H05	00-06
951A0114H05	02-07
951A0114H06	00-06
951A0114H06	02-07
954A0070H01EU	08-04
954A0070H02EU	08-04
954A0070H03EU	08-04
954A0071H01EU	08-04
954A0072H01EU	08-04
956A0012G03EU	06-03
956A0012G07EU	06-03
956A0014H01	13-02
956A0014H01	16-18
956A0025H23EU	12-01
956A0025H28EU	12-01
956A0044H02	01-07
956A0044H02	10-
956A0044H11	10-
956A0044H12	10-
956A0044H13	10-
956A0044H14	10-
956A0045H02	01-07
956A0045H02	10-
956A0045H11	10-
956A0045H12	10-
956A0045H13	10-
956A0045H14	10-
959A0044H11	02-02
959A0054H10	02-02
959A0054H23	06-05
959A0054H25	06-05
959A0057H04	06-03
959A0057H04	12-01
959A0057H05	12-01
959A0057H09	02-12
959A0057H09	03-03
959A0057H18	02-12
959A0057H18	03-03
959A0082H02	00-02
959A0082H02	04-03
960A0066H11	13-01
960A0068H11	13-01
960A0075H41	13-01
960A0076H41	13-01
960A0082G01	13-01
960A0082H01	13-01
960A0090G01	13-01
960A0090H01	13-01
980A0012K58	02-08
DIS	01-07
INF	01-01
INF	01-02

Item number	Fig - Index
INF	01-03
INF	01-05
INF	01-08
INF	01-09
INF	01-10
INF	01-11
INF	01-12
INF	01-13
INF	01-14
INF	01-15
INF	16-03
INF	16-04
INF	16-05
INF	16-09
INF	16-10
INF	16-16
INF	16-17
INF	16-19
INF	16-20
INF	16-24
INF	16-25
SPEC	08-05
SPEC	08-06
SPEC	08-08
SPEC	08-09
SUC	01-06