

Liquid Level Glasses



List Pricing

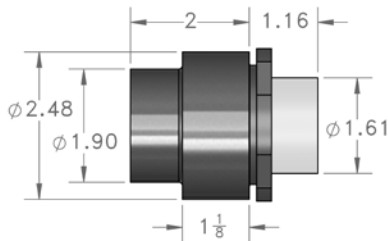
Effective: March 20, 2017

LEVEL EYE® (LIQUID LEVEL SIGHT GLASSES)

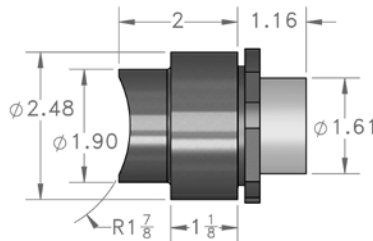
Part No.	Housing Length In.	Description	List Price
1100-R	2	Square End housing with Reflex Lens	\$130
1100-RN	2	Square End housing with Reflex Lens and Frost Shield	\$161
1100C-R	2	Saddle Milled housing with Reflex Lens	\$139
1100C-RN	2	Saddle Milled housing with Reflex Lens and Frost Shield	\$171
1100A-R	3	Square End housing with Reflex Lens	\$146
1100A-RN	3	Square End housing with Reflex Lens and Frost Shield	\$178
1100L-RN	4	Square End housing with Reflex Lens and Frost Shield	\$200



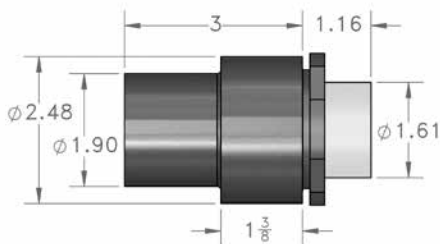
Contact Danfoss for other configurations



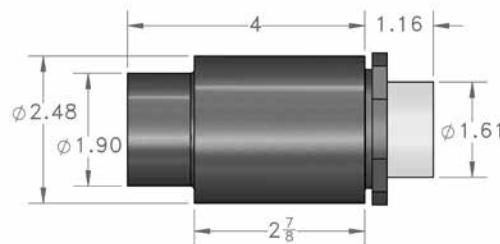
1100-R (No Frost Shield)
1100-RN (With Frost Shield)
All Dimensions in Inches



1100C-R (No Frost Shield)
1100C-RN (With Frost Shield)
All Dimensions in Inches



1100A-R (No Frost Shield)
1100A-RN (With Frost Shield)
All Dimensions in Inches



1100L-RN (With Frost Shield)
All Dimensions in Inches

Features

- Suitable for ASME code vessels
- 1000 psi/69 bar working pressure limit
- SA36 steel construction standard
- Suitable for low temperature applications (-60 °F/-51 °C)
- 1100A-Canadian registered (all provinces) - CRN0F0829.2C

AKS 38 - Liquid Level Float Switch

Type	Connections	Part No.	List Price
AKS 38	1" WN	148H3204	\$767
AKS 38	1" Socket Weld	148H3206	\$743
AKS 38	3/4" FPT	148H3207	\$743

Flanges included with AKS-38 Float Switch

Contact Danfoss for other connection types/sizes.



Features

- Reliable SPDT micro switch
- Protection from high and low levels
- Operates liquid solenoid valve
- Transparent switch box cover for visual indication
- Switch box can be rotated to improve visibility