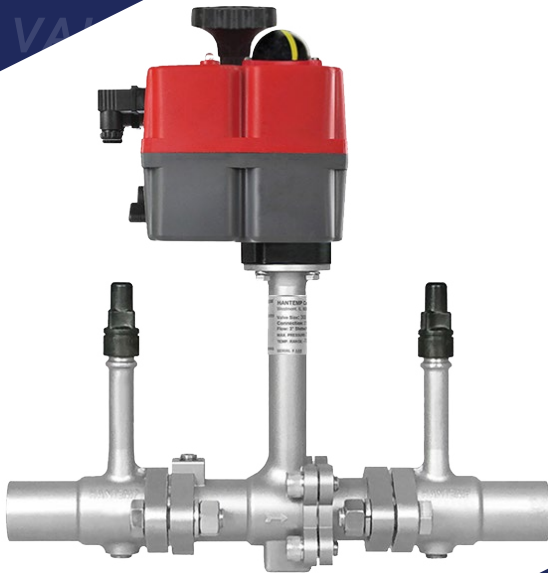




STAINLESS STEEL
Valves & Controls For
Industrial Refrigeration



MCBV Motor Controlled Ball Valves

See Bulletin MCBV0717

HANTEMP MCBV includes an electronic actuator for modulation or open/closed control of the valve. All electronic actuators include integrated manual override Handle/Indicator for opening/closing. This **patented** design of features **stainless steel** construction, very low pressure drop, gradual opening and closing, standard F05 actuator mount, and an extended valve neck for simple insulation. Standard modulating **Open Port (OP)**; available with optional **Characterized V-port (VP)** for low-flow modulation, and **Tea-Drop (TD) & Slotted (SL)** ports for expansion. Flanged valves are drop-in replacements for Hansen & Parker R/S. Compatible with all common industrial refrigerants (NH₃, CO₂, halocarbons, hydrocarbons, etc.). Rated for 800 psig SWP and safe operating temperatures -70°F to +240°F.

To order: Specify valve port size & type with application details, and operating voltage.

Size (mm)	MCBV Motor Controlled Ball Valve w/ Electronic Actuator		Electronic Actuator Options: Add		Pneumatic Actuator Deduct ²
	Flanged ³ (Less Flanges)	Weld Inline ⁴	Proportional Control ¹	Internal Battery Power Backup	
¾" (20)	\$2,275	\$2,300	\$998	\$998	- \$100
1" (25)	\$2,575	\$2,600	\$998	\$998	- \$100
1¼" (32)	\$2,775	\$2,800	\$998	\$998	- \$100
1½" (38)	\$4,050	\$4,100	\$998	\$998	- \$300
2" (50)	\$4,150	\$4,200	\$998	\$998	- \$300
2½" (65)	\$4,600	\$4,650	\$998	\$998	- \$300
3" (80)	Contact Factory	\$4,975	\$998	\$998	- \$300



SSBW 3" - Weld Inline

Note: Explosion Proof (Class 1, Div 2) actuators add \$1,200 list

Note: Contact factory for electronic spring-close actuators

¹ 4-20mA, or 0-10V; Variable speed-control option for controlled opening/closing add \$725 list

² Deduct from base MCBV price; pneumatic actuators are air-open/spring-close; contact factory for direct-mount solenoids

SSBV BALL VALVES (Manual)

See Bulletin BV1622

Same ball valve bodies and internals as MCBV (above). Very low pressure-drop.

To order: Specify model, port size, connection size and type (flanged or weld inline). Ball valves are supplied with standard open-port ball unless otherwise specified*.

Manual Ball Valves w/ Lock-Out/Tag-Out

Size (mm)	Flanged ³ (Less Flanges)	Weld Inline ⁴	Weight (lbs)
¾" (20)	\$1,225	\$1,250	10
1" (25)	\$1,525	\$1,550	13
1¼" (32)	\$1,725	\$1,750	16
1½" (38)	\$2,500	\$2,550	24
2" (50)	\$2,600	\$2,650	28
2½" (65)	\$3,050	\$3,100	30
3" (80)	Contact Factory	\$3,425	32



SSBW 1" - Flanged w/ Directional Handle



SSBW 2" - Weld Inline w/ Directional Handle

*Ball Profiles: Standard (OP) Open-Port; Alternate (VP) Characterized V-Port (low flow); \$100 list extra for (TD) Tear-Drop and (SL) Slotted Port Profiles

Note: Quarter-turn coupled service ball valves are available for ¾" to 2½" flanged valves (pg.5).

³ Includes stainless steel hardware; for Companion Flange Kits see pg. 2

⁴ Specify Socket Weld (standard for ¾" through 2") or Butt Weld

STAINLESS STEEL FLANGES & FLANGE UNIONS

See Bulletin FL612

This line of 1/4" to 3" industry standard traditional tongue & groove refrigeration flanges & flange union kits from HANTEMP are ideal for use in **stainless steel** piping systems. Designed for mating with HANTEMP, Hansen, R/S, and Frick valves or separately in unions, these rugged flanges can be properly welded to ordinary steel or stainless steel piping. Installation of **stainless steel** flanges with stainless steel piping ensures optimum weld joint properties. Socket or butt weld end connections are available; Schedule 40 or 10 end connections are available for butt weld flanges.

A line of **THREADED stainless steel** flanges is also available to broaden usage beyond welding installations. These flanges & unions are machined using single-point threading to ensure that threaded joints are tight and easily connected to other male NPT refrigeration or cryogenic components including brass, iron, plastic, and aluminum. 1/4" to 2 1/2" pipe sizes are available (2 bolt standard configuration for 1/4" through 1 1/4"; 4 bolt standard configuration for 1 1/2" to 3" flanges). Flanges available 7/8" to 3 1/8" ODS are bored to accept copper tube.*

To order COMPANION FLANGE KIT (for flanged valves): Specify flange size and connection size & style. Socket weld is standard. Butt weld flange kits are supplied for Schedule 40 pipe connections; Schedule 10 available upon request. **Kit** includes 2 male tongue flanges only, for use on female flanged valves.

To order FLANGE UNION KIT: Specify flange size and connection size & style. Socket weld is standard. Butt weld flange union kits are supplied for Schedule 40 pipe connections; Schedule 10 available upon request. **Union Kit** includes one male tongue flange, one female groove flange, stainless steel nuts, bolts, lock washers, and a multi-use flat gasket.

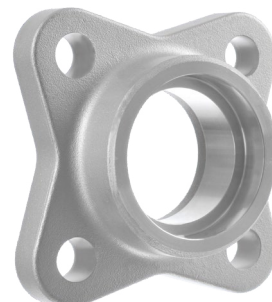
Sizes	Nominal Size	Connection Type ¹	Companion Flange Kit ²	Union Kit	Single Male or Female ²
1/2" - 2 bolt ³	50 (S8)	SW, BW	\$190	\$265	\$95
3/4" - 2 bolt	100	SW, BW	\$240	\$305	\$120
1" - 2 bolt	100	SW, BW	\$240	\$305	\$120
1 1/4" - 2 bolt	100	SW, BW	\$240	\$305	\$120
1 1/2" - 4 bolt	200	SW, BW	\$520	\$575	\$260
2" - 4 bolt	200	SW, BW	\$520	\$575	\$260
2 1/2" - 4 bolt	300	SW, BW	\$920	\$970	\$460
3" - 4 bolt	300	SW, BW	\$920	\$970	\$460

* Flanges to accept ODS copper available in most sizes. (SS bored to copper tube OD)

¹ Add 10% for FPT and ODS connections

² Hardware (per flange); Size 050 \$15.00; Size 100 \$20.00; Size 200 \$40.00; Size 300 \$50.00

³ 1/2" Flange reducing connections: 1/4", 3/8" NPT; 1/4", 3/8", 3/4" SW



4 Bolt Socket Weld Flange



4 Bolt Butt Weld Flange



4 Bolt FPT Flange



4 Bolt Flange Union



2 Bolt Socket Weld Flange



2 Bolt Butt Weld Flange



2 Bolt FPT Flange



2 Bolt Flange Union

A4 MODULAR REGULATORS

See Bulletin A4116



A4AWt Weld Inline **Regulator** (Weld) A4Bt Electric **Wide Opening** (Flanged) A4OWt **Outlet** Pressure Regulator (Piped)

This line of reliable, compact lower-weight **stainless steel** modular pressure regulators comprises regulators, solenoid valves, control modules, and RR Flexible Stations (see page 6). **These units have the same capacities & model number, and interchange with flanged Hansen (same coil) & Parker R/S (except 1¼") models.** For flanged or weld inline installations in sizes ¾", 1", 1¼" 1½", 2", and 2½". Add QSV (Quarter-Turn Service Valves) to create RR Station (see pg. 5/6). ODS copper sizes available ⅞" to 2⅝". Standard Range A 0-150 psig; B 30-300 psig; V 20" - 130 psig. *All models include an internal strainer unless otherwise specified. Specify model, connection size, and voltage w/ order.*

Size (mm)	Size Nominal	Size & Connection SW, BW, FPT	A4At Flanged (Less Flanges) ¹	A4At Weld Inline	Weight (lbs)
¾" (20)	100	¾", 1", 1¼"²	\$945	\$995	14
1" (25)			\$1,095	\$1,145	16
1¼" (32)			\$1,245	\$1,295	18
1½" (40)	200	1½", 2", 2½"³	-	\$1,845	30
2" (50)			-	\$2,095	31
2½" (65)			-	\$2,545	32

A4 Modules (+ price in addition to Standard Regulator prices above)

A4At —	Flanged or Weld Inline Regulator (Standard) Controls evaporator, vessel, condensing pressure or defrost relief. (<i>prices above</i>)	A4Kt + \$80	Reseating Relief Regulator Continuously reseats after operation. For defrost or vessel to vessel relief applications. Setting is sealed.
A4St⁴ + \$450	Electric Shut-Off Regulator (includes coil) Controls temperature at established pressure when all flow must be occasionally stopped.	A4Bt⁴ + \$450	Electric Wide Opening Regulator (includes coil) Controls system temperature for evaporator defrost with wide valve opening for maximum cooling.
A4Dt⁴ + \$975	Dual Pressure Regulator (includes coil) Controls evaporator pressure at low pressure point or defrost/temp./pressure relief at high pressure when de-energized. (<i>Contact factory for 1½"-2½"</i>)	A4Lt + \$250	Differential Pressure Regulator (Piped) Maintains set difference between inlet & outlet pressure. For liquid pump relief, defrosting, or heat recovery discharge boosting.
A4Pt + \$125	Pneumatically Compensated Controls pressure setting pneumatically.	A4Ot + \$375	Outlet Pressure Regulator (Piped) Controls regulator outlet pressure.
S4At (pg. 4)	Solenoid Valve For liquid, suction, or hot gas.	A4OSt⁴ + \$825	Outlet Pressure Regulator w/ Shut-Off (includes coil) Same as above plus Stop. (<i>Piped</i>)

¹ Includes stainless steel hardware; for Companion Flange Kits see pg. 2

³ 2½" BW only; for 3" BW contact factory

² 1¼" BW or Flanged only

⁴ "Less coil" deduct \$100

SOLENOID VALVES

See Bulletin S40117

Replaces Hansen & R/S equivalents; **INCLUDES** coil & DIN plug (specify volts): interchanges w/ Hansen



S4AWt Solenoid Valve (weld)



S8t Solenoid Valve



Cord or 1/2" NPT

Solenoid Valve Prices Always **Include**
Molded Waterproof Coil
With Standard Green Pilot Lights
(Available for 115VAC, 230VAC, or 24VAC)

These rugged **Stainless Steel** pilot-operated Solenoid Valves are suitable for **ammonia liquid, suction, hot gas; carbon dioxide, other refrigerants, heat transfer fluids, and similar liquids & gases: as approved.** They interchange with most Hansen and Parker models and can functionally replace Danfoss and other solenoid valve designs. Pilot operation utilizes a controlled orifice to actuate a spring-closing Teflon sealed disc-piston and skirt-guided Teflon seat disc. The bodies accommodate an optional, bottom-accessible internal strainer. Entire valve line uses single size 15 watt moisture proof encapsulated coil* with 1/2" DIN connector for cord or 1/2" NPT. **Stainless Steel** bodies are for direct weld-in or refrigeration flanges. In sizes 3/4", 1", 1 1/4" 1 1/2", 2", and 2 1/2" as well as 7/8" to 2 5/8" ODS copper sizes. These valves are superior in every way to present industry designs. *All models include an internal strainer unless otherwise specified. Specify coil voltage.*

Model S4At Solenoid Valves **stainless Steel (includes coil)***

Size (mm)	Size Nominal	Size & Connection SW, BW, FPT	S4At Flanged (Less Flanges) ¹	S4AWt Weld Inline	Weight (lbs)
3/4" (20)	100	3/4", 1", 1 1/4" ²	\$995	\$1,045	14
1" (25)			\$1,145	\$1,195	16
1 1/4" (32)			\$1,295	\$1,345	18
1 1/2" (40)	200	1 1/2", 2", 2 1/2" ³	-	\$1,895	30
2" (50)			-	\$2,145	31
2 1/2" (65)			-	\$2,595	32

S7t & S8t Solenoid Valves **stainless Steel (includes coil)***

Model	Size (mm)	Size Nominal	Size & Connection SW, BW, FPT	Flanged (Less Flanges) ¹	Weld Inline	Weight (lbs)
S8t	1/2" (15)	50	3/8", 1/2", 3/4"	\$575	-	4
S7t Light Spring	3/4" (20)	100	3/4", 1", 1 1/4"	\$985	\$1,035	14
	1" (25)			\$1,135	\$1,185	16
	1 1/4" (32)			\$1,285	\$1,335	18

Note: When ordering coils specify voltage (24VDC, 115VAC, or 240VAC), and Triple-Pilot Light Color (if needed)

*"Less coil" Deduct \$100

¹ Includes stainless steel hardware; for Companion Flange Kits see pg. 2

² 1 1/4" BW or Flanged only

³ 2 1/2" BW only; for 3" BW contact factory

QUARTER-TURN SERVICE/EXPANSION BALL VALVES

See Bulletin QSV0915

Flanged connection on one end; weld in-line on other end

This innovative, compact, lightweight, **stainless steel** ball valve is male tongue flanged on one end with a welded connection on the other end. Ideal isolation valve which can be close coupled to other nominal flanged valves or included HANTEMP RR Flexible Stations (Platforms). Additional applications include columns, valve/union combination, and quick shut-off valve for easy service. Supplied as an inlet/outlet pair in RR platform (see pg. 6).

QSV version has tear-drop ball for liquid expansion control and high visibility yellow seal cap (see table below).

Features open/closed stem indicator, and a heat break at the valve body which permits valve to be welded inline without disassembly. Stops flow in both directions. Rated for SWP of 800 psig and safe fluid temperatures of -70°F to +240°F.

To order: Specify size and connection type (socket or butt weld). For **expansion QSV** (tear-drop ball), provide tons and system pressure/temperature.

Size (mm)	Weld Connections ¹	Nominal Flange Size	List Price Ea. QSV (Shut-off)	List Price Ea. QSV (Expansion)	Weight (lbs)
¾" (20)	BW, SW	100	\$375	\$475	3
1" (25)	BW, SW	100	\$375	\$475	3
1¼" (32)	BW, SW	100	\$375	\$475	3
1½" (40)	BW, SW	200	\$650	\$750	7
2" (50)	BW, SW	200	\$650	\$750	7
2½" (65)	BW	200	\$650	\$750	7

*Optional seal cap **Lanyard** add \$25 list

Note: Includes stainless steel hardware; for Companion Flanges see pg. 2

¹ SW is standard ¾" through 2"; BW only on 2½"



QSV 1" - SW



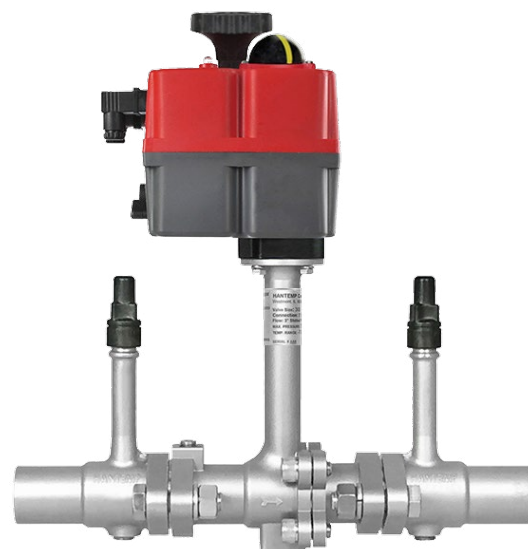
QSV 2" - SW

RR FLEXIBLE STATIONS

See Bulletin RR0517

This new industrial refrigeration control uses the **RR MULTI-VALVE PLATFORM CONCEPT** to include ball valves and standard control valves (w/ internal strainers). These are easy to **Install, to Repair, or to Remove WITHOUT total system pump-down**. Standard HANTEMP Valves and Regulators are factory-assembled into simple packaged weld in-line assemblies **with** QSV Quarter-Turn Service Valves; ready for welding. For service: replace parts in situ, or remove control module section.

1. Order (pp 3, 4) any flanged (less flanges) **HANTEMP ball valve, solenoid valve, regulator, or control module**, and specify the RR (shut-offs or one expansion). (Unit ships assembled)
2. Weld complete moderate-weight RR Station directly into piping.
3. Put the Station into operation by cautiously opening QSV Quarter-Turn Service Valves.



BALL VALVES

Size (mm)	Size & Connection SW, BW, FPT	MCBV Motor Controlled Ball Valves*			Pneumatic Actuator ¹ (w/ Spring Close)	TOTAL Weight (lbs) ²
		On/Off	Proportional Control	Internal Battery Power Backup		
¾" (20)	¾", 1", 1¼"	\$3,025	+ \$998	+ \$998	- \$100	20
1" (25)		\$3,325	+ \$998	+ \$998	- \$100	23
1¼" (32)		\$3,525	+ \$998	+ \$998	- \$100	26
1½" (40)	1½", 2", 2½" ³	\$5,350	+ \$998	+ \$998	- \$300	43
2" (50)		\$5,450	+ \$998	+ \$998	- \$300	49
2½" (65)		\$5,900	+ \$998	+ \$998	- \$300	51

*Ball Profiles: Standard (OP) Open-Port; Alternate (VP) Characterized V-Port (low flow);
\$100 list extra for (TD) Tear-Drop and (SL) Slotted Port Profiles

Note: Explosion Proof (Class 1, Div 2) actuators add \$1,200 list; contact factory for electronic spring-close actuators

¹ Deduct from base On/Off price; pneumatic actuators are spring-close; Contact factory for direct mount solenoids

² Weights may vary depending on actuator selection

³ 2½" BW connection only

CONTROL VALVES

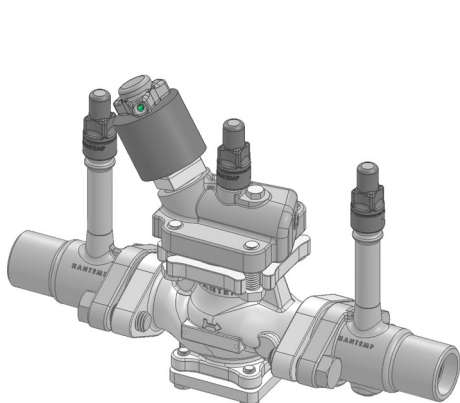
Size (mm)	Size Nominal	Size & Connection SW, BW, FPT	w/ S4At Solenoid Valve	w/ Pressure Regulators				TOTAL Weight (lbs)
				A4At Regulator	A4St Regulator w/ Shutoff	A4Bt Wide-Opening Regulator	A4Dt Dual Pressure Regulator	
¾" (20)	100	¾", 1", 1¼"	\$1,745	\$1,695	+ \$450	+ \$450	+ \$975	20
1" (25)			\$1,895	\$1,845	+ \$450	+ \$450	+ \$975	22
1¼" (32)			\$2,045	\$1,995	+ \$450	+ \$450	+ \$975	24

Note: Includes pilot-light coil where applicable. "Less coil" deduct \$100

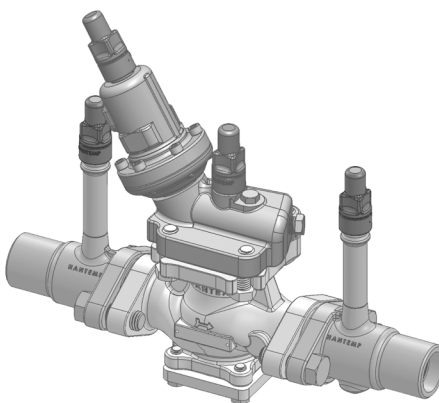
Note: **RR Pricing (above)** Includes list extra for connected QSV Quarter-Turn Service Valves.

Specify connections; also specify tons if outlet is a QSVE expansion valve (**\$100 list extra**).

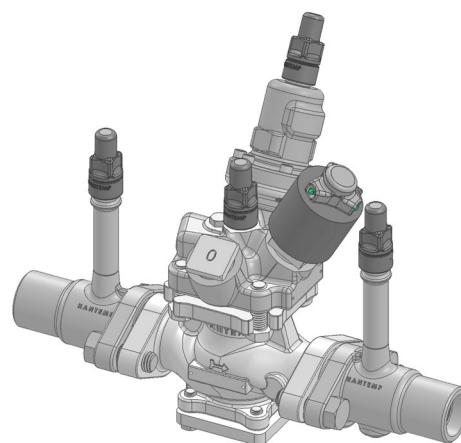
"Ready To Weld-In"



S4At-RR
(Solenoid)



A4At-RR
(Regulator)



A4St-RR
(Regulator w/ Shutoff)

SGV GAUGE VALVES & GAUGES

See Bulletin GV116

HANTEMP presents a rugged, wrench-friendly **stainless steel** gauge valve which **eliminates rusting and low-temperature embrittlement breakage**. The SGV Gauge Valve is suitable for isolation of gauges and transducers, venting, and pumpout of components. This safe back-seating design is approved for 800 Psig SWP and compatibility with all common refrigerants. The SGV is available as standard extended neck body or compact valve body (**SGVC**). Seal caps feature finger grips. The **Lanyard** accessory avoids dropped seal caps.

To order: Specify model. Customers are supplied with SGV standard long body unless otherwise specified.

Model	List Price (Includes Lanyard)
SGV (standard)	\$195
SGVC (compact)	\$190

GAUGE VALVES

HANTEMP's 2½" liquid-filled calibrated **stainless steel** compound ammonia pressure-temperature **gauge** with 1/4" NPT bottom connection. Available in two pressure ranges (30" Hg - 150 psi and 30" Hg - 300 psi).

To order: Specify model number.

AMMONIA GAUGES

Model Number	Range	List Price
SSG-150	30" Hg - 150 psi	\$82
SSG-300	30" Hg - 300 psi	\$82

Note: Combination pressure-temperature gauges

CHECK VALVES

See Bulletin SCV0815 & CK40217

HANTEMP's compact, lightweight spring-closing SCV check valve is for **weld in-line** installation. Constructed of **stainless steel** for optimal corrosion resistance, it is designed to prevent the reverse flow of refrigeration liquid or gas. No gaskets required. All **stainless steel** seating is for lifetime use. Approved for 2000 psig SWP. For ammonia and most refrigerants.

CK4t **Cartridge Check Valve** is for flanges or outlets of flanged valves. Male tongue inlet and female groove outlet (no male adapter ring is required for close coupling to outlet of **female** flanged valves). Approved for 800 psig SWP.

To order: Specify size and connection type; if for butt weld connections, specify Schedule 40 or Schedule 10 pipe wall.

Size (mm)	SCV SW, BW	CK4t (Cartridge) Less Flanges	CK4t Flange Union Kit
¾" (20)	\$305	\$265	\$310
1" (25)	\$410	\$265	\$310
1¼" (32)	\$515	\$265	\$310



SGV Gauge Valve
w/ lanyard



SCV Weld In-line Check Valve



CK4t In-Line Cartridge Check Valve
(all Stainless Steel)

SEE-SWITCH® FLOAT SWITCHES

See Bulletin FS0217

This rugged, compact **stainless steel** refrigerant float switch offers **superior visibility** while conforming to conventional industry piping standards. Features a multi-direction DIN connection which accommodates neoprene cord or 1/2" NPT conduit, a switching arm utilizing a **powerful neodymium magnet**, and a yellow indicator wand providing clear visual indication of the switch position. Interchangeable dimensionally with competitors' tanks via combination 3/4" FPT/1" BW side and bottom connections. Rated for 800 psig SWP and operating refrigerant temperatures -100°F to +150°F. For ammonia & other common refrigerants including CO2, glycols, brines, light oils, and hydraulic fluids.

The HANTEMP Controls SSSL has proven to be the **MOST RELIABLE** of conventional float switches due to the all **stainless steel** construction, use of Honeywell **15 amp Micro-Switches™**, and the **extended neck** for isolation from the tank frost region.

Heater screw-in accessory is for high moisture conditions below -20°F.

To order: Specify model number plus application details when possible, including refrigerant, temperature, and pressure.

SSLL Stainless Steel
SEE-SWITCH® Float Switch -
"The Most Reliable Float Switch"

Item	List Prices	Weight (lbs)
SSLL Stainless Steel Float Switch	\$990	8
LS Switch Assembly Replacement	\$500	2
LT Stainless Tank Assembly Only	\$775	6
HTR 10 Watt 24V Switch Heater	\$215	.5
Stainless Steel Switch Cover	\$105	1
Two Side-Connections SSLLS*	\$1,115	9

*SSLLS model has additional lower side-connection:
4" below primary side-connection.



SSLL Float Switch

RFF STAINLESS STEEL VALVES & STRAINERS

HANTEMP Controls is a proud distributor of French made **stainless steel** RFF Valves & Strainers. All products rated to 580 psi SWP. Contact HANTEMP for more information. *Prices are NET (FOB our factory), not List.*

STAINLESS STEEL SHUT-OFF VALVES



Size (mm)	Available Options			Net Each
	Angle / Globe	Handwheel / Seal Cap	Connection ¹	
3/8" (10)	AS / GS	HW / SC	BW	\$140
1/2" (15)	AS / GS	HW / SC	BW	\$145
3/4" (20)	AS / GS	HW / SC	BW	\$185
1" (25)	AS / GS	HW / SC	BW	\$195

Sample Part # SS-AS-075-HW-BW; 3/4" Stainless Steel Angle Shut-Off Valve w/ Handwheel; Butt Weld (*shown*)

STAINLESS STEEL HAND EXPANSION VALVES



Size (mm)	Available Options			Net Each
	Angle / Globe	Handwheel / Seal Cap	Connection ¹	
3/8" (10)	VE / RE	HW / SC	BW	\$180
1/2" (15)	VE	HW / SC	BW	\$185
3/4" (20)	VE / RE	HW / SC	BW	\$240
1" (25)	VE	HW / SC	BW	\$245

Sample Part # SS-RE-050-SC-BW; 1/2" Stainless Steel Globe Hand Expansion Valve w/ Seal Cap; Butt Weld (*shown*)

STAINLESS STEEL STOP CHECK VALVES



Size (mm)	Available Options			Net Each
	Angle / Globe	Seal Cap (only)	Connection ¹	
3/8" (10)	ACK / GCK	SC	BW	\$185
1/2" (15)	ACK / GCK	SC	BW	\$190
3/4" (20)	ACK / GCK	SC	BW	\$255
1" (25)	ACK / GCK	SC	BW	\$270

Sample Part # SS-GCK-075-SC-BW; 3/4" Stainless Steel Globe Stop Check Valve w/ Seal Cap; Butt Weld (*shown*)

STAINLESS STEEL STRAINERS



Size (mm)	Available Options			Net Each
	Angle / Straight	Filter Mesh Size ²	Connection ¹	
3/8" (10)	AST / SST	60	BW	\$240
1/2" (15)	AST / SST	60	BW	\$250
3/4" (20)	AST / SST	60	BW	\$260
1" (25)	AST / SST	60	BW	\$295

Sample Part # SS-AST-060-100-BW; 1" Stainless Steel Angle Strainer w/ 60 Mesh Filter; Butt Weld (*shown*)

¹ Default connection Schedule 40 BW. Contact HANTEMP Controls for SW Connections

² 60 Mesh standard; 100 Mesh add 5%

WITT PUMPS & FLOATS (FOR AMMONIA AND OTHERS)

HANTEMP Controls is a proud distributor of German made Th. Witt pumps, floats, parts, and more. Contact HANTEMP for more information and parts availability. *Prices are NET (FOB our factory), not List.*

HERMETIC REFRIGERANT PUMPS (HRP SERIES)

HRP Refrigerant Pumps with serviceable integral canned motor are chosen whenever a seal-free solution is needed or high operating pressures are required. The delivery properties of these pumps ensure the volume flow is not interrupted by varying pressures. Provide system and flow details.



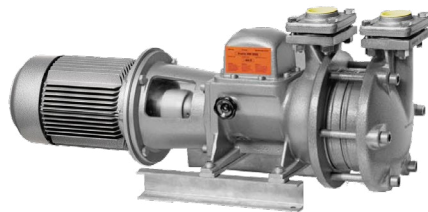
Model	Max. Capacity @60Hz (US GPM)	Connection (suction/discharge)	Net Each ¹	Weight (lbs)
HRP3232	24	1¼/1¼	\$6,095	110
HRP5040	61	2/1½	\$7,195	150
HRP5050	72	2"/2"	\$8,195	216
HRP8050	154	3"/2"	\$8,895	235
HRP10080	290	4"/3"	\$10,195	385

¹ "Less counter-flanges" deduct \$100

Note: Shown for NH₃; other refrigerants available

FLANGED-MOTOR REFRIGERANT PUMPS (GP SERIES)

GP refrigerant pumps with standard flanged motors have a proven track record of reliability and robustness earned over decades. All parts are easily accessible and on-site servicing is straight-forward.



*Proper pump selection
requires system piping & flow
details, and evaluation.*

Model	HP*/ RPM	NH ₃ Capacity @60Hz (US GPM)	Connection (suction/discharge)	Net Each ²	Weight (lbs)
GP41	1.5/1800	18	1½/1½	\$5,295	167
GP42	1/1200	19	1½/1½	\$6,195	178
	3/1800				
GP51A	3/1200	55	2"/2"	\$7,195	286
	7.5/1800				
GP51	7.5/1800	88	2"/2"	\$7,195	286
GP52	5/1200	73	2"/2"	\$8,295	363
GP82	10/1800	123	3"/2"	\$9,595	431

² "Less counter-flanges" deduct \$100

Note: Shown for NH₃; other refrigerants available *HP = Nominal

HIGH SIDE FLOAT REGULATORS

The High-Side Control provides a direct-acting slide valve to expand only liquid refrigerant from the high to the low side of a refrigeration system and is also an ideal air purging point.



Size (mm)	Model	Capacity* (Tons)	Net Each ³	Weight (lbs)
1" (25)	HR1 BW	11	\$2,095	22
1" (25)	HR1	27	\$2,295	29
1¼" (32)	HR2	110	\$3,095	51
2" (50)	HR3	329	\$4,095	119
3" (80)	HR4	951	\$7,695	297

³ Weld connections; less isolation valves

* NH₃ Nominal Suction, +15°F; other refrigerants available

Note: Contact HANTEMP for BDP2 Automatic Oil Return System, and DWR Heat Exchanger pricing & availability.

CONTENTS

- *MCBV MOTOR CONTROLLED BALL VALVES*
- *SSBV MANUAL BALL VALVES*
- *STAINLESS FLANGES & FLANGE UNIONS*
- *A4t REGULATOR MODULES*
- *S4At, S7t & S8t SOLENOID VALVES*
- *QSV QUARTER-TURN SERVICE/EXPANSION VALVES*
- *RR FLEXIBLE STATIONS (PLATFORMS)*
- *SGV GAUGE/PURGE VALVES & GAUGES*
- *SCV & CK4t CHECK VALVES*
- *SSLL FLOAT SWITCHES*
- *RFF STAINLESS STEEL VALVES & STRAINERS*
- *WITT PUMPS & FLOATS*



TO ORDER

To place an order, email sales@hantempcontrols.com or call the factory directly at (630) 537-1049. Specify volts, etc. at time of order.
Credit cards accepted.

DISCLAIMER

HANTEMP Controls reserves the right to alter product specifications, materials, and pricing without notice.

SAFETY NOTICE

The valves, switches, and other controls from HANTEMP Controls should be installed, maintained, and serviced only by an experienced refrigeration professional. **Safety glasses are always necessary.** This includes reading and understanding pertinent product safety bulletins and installation instructions. Before servicing, all products should be isolated from the refrigeration system and all refrigerant evacuated from the piping. More safety information can be found at www.hantempcontrols.com.

RETURN POLICY

Products returned are normally subject to a minimum 10% restocking charge. Restocking charge is based on actual invoiced amount. An RMA return request form can be found on our website, www.hantempcontrols.com. Return may not be made without first contacting HANTEMP Controls and receiving a RETURN MATERIAL AUTHORIZATION (RMA) number. To ensure accurate and prompt processing of your return, reference your original purchase order number, our invoice number, and the RMA number on your communications, and your packing list. Freight on all return shipments must be "PREPAID". Special construction items are non-returnable and cannot be canceled once in production. Any claims by Buyer for omissions or shortages in a shipment shall be waived unless Seller (HANTEMP Controls) received notice thereof within fourteen (14) days after Buyer's receipt of the shipment.

COMPANY CONTACTS

Main Office & Factory

33 Chestnut Ave.

Westmont, IL 60559

Phone: (630) 537-1049

Email: info@hantempcontrols.com

Web: www.hantempcontrols.com

Sales - Mike Effrein

Cell: (630) 414-1426

Email: MEffrein@hantempcontrols.com

Engineering - Ramiro Herrera

Email: RHerrera@hantempcontrols.com

Operations - Bill Banks

Email: BBanks@hantempcontrols.com

WARRANTY

All HANTEMP Controls products are warranted against defects in workmanship and materials for a period of one year (90 days for electronics) from date of shipment from the factory. This warranty period is applicable only when products are properly applied, installed, operated, and serviced as specifically stated in HANTEMP Controls product bulletins unless otherwise approved in writing. **Field labor and travel expenses are not warranty included.**

TRADEMARK DISCLAIMER

All trademarks are the property of their respective owners. HANTEMP Controls, LLC is in no way associated or affiliated with Hansen Technologies, Inc., Parker Hannifin Corp., or Danfoss A/S.