

Liquid Level Glasses



List Pricing

Effective: March 20, 2017

LLG - Liquid Level Glasses 7¼ in. – 61 in.

LIQUID LEVEL GLASSES - LLG

With safety system and welding nipples *

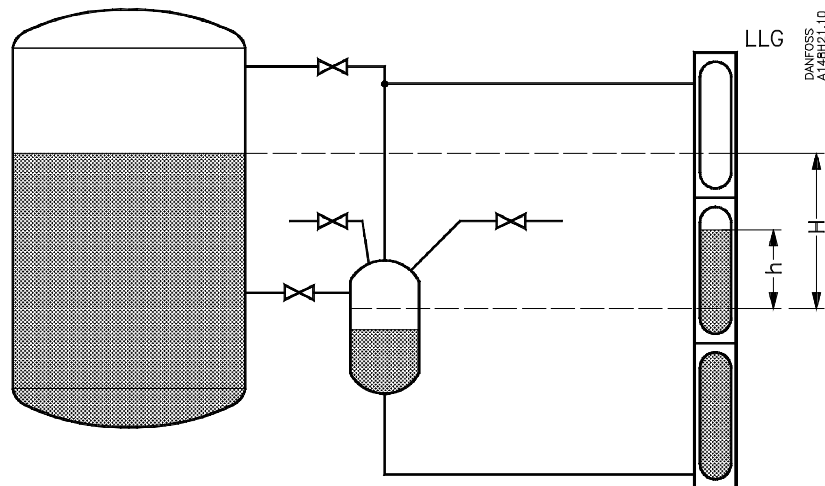
LIQUID LEVEL GLASSES - LLG F

With safety system, welding nipples * and frost shield

Length ** Inches (mm)	LLG		LLG F		Weight	
	Type	List Price	Type	List Price	lbs	(kg)
7¼ (185)	LLG 185	\$594	LLG 185 F	\$867	9.3	(4.2)
13¼ (335)	LLG 335	\$783	LLG 335 F	\$1,067	17.0	(7.5)
23¼ (590)	LLG 590	\$1,329	LLG 590 F	\$1,800	29.0	(3.2)
29¼ (740)	LLG 740	\$1,622	LLG 740 F	\$2,038	36.0	(6.5)
39¼ (995)	LLG 995	\$1,894	LLG 995 F	\$2,416	50.0	(22.5)
45 (1145)	LLG 1145	\$2,265	LLG 1145 F	\$2,624	57.0	(25.7)
61 (1550)	LLG 1550	\$3,293	LLG 1550 F	\$3,639	74.0	(33.5)

* The welding nipples extend 3¼ in. from the level glass and can easily be welded into a 1/2 in. socket-weld connection. If shut-off valves are needed, please see 1/2 in. socket-weld shut-off valves type SVA

** Length between LLG connections



Liquid Level Glasses



List Pricing

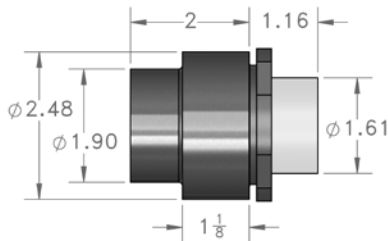
Effective: March 20, 2017

LEVEL EYE® (LIQUID LEVEL SIGHT GLASSES)

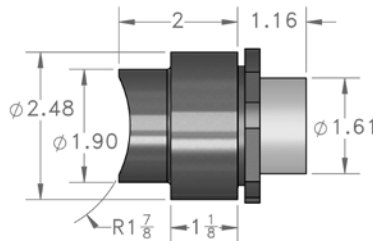
Part No.	Housing Length In.	Description	List Price
1100-R	2	Square End housing with Reflex Lens	\$130
1100-RN	2	Square End housing with Reflex Lens and Frost Shield	\$161
1100C-R	2	Saddle Milled housing with Reflex Lens	\$139
1100C-RN	2	Saddle Milled housing with Reflex Lens and Frost Shield	\$171
1100A-R	3	Square End housing with Reflex Lens	\$146
1100A-RN	3	Square End housing with Reflex Lens and Frost Shield	\$178
1100L-RN	4	Square End housing with Reflex Lens and Frost Shield	\$200



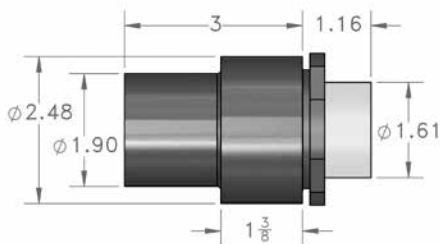
Contact Danfoss for other configurations



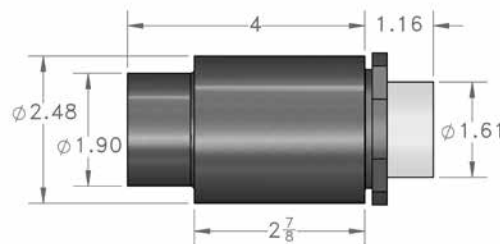
1100-R (No Frost Shield)
1100-RN (With Frost Shield)
All Dimensions in Inches



1100C-R (No Frost Shield)
1100C-RN (With Frost Shield)
All Dimensions in Inches



1100A-R (No Frost Shield)
1100A-RN (With Frost Shield)
All Dimensions in Inches



1100L-RN (With Frost Shield)
All Dimensions in Inches

Features

- Suitable for ASME code vessels
- 1000 psi/69 bar working pressure limit
- SA36 steel construction standard
- Suitable for low temperature applications (-60 °F/-51 °C)
- 1100A-Canadian registered (all provinces) - CRN0F0829.2C

AKS 38 - Liquid Level Float Switch

Type	Connections	Part No.	List Price
AKS 38	1" WN	148H3204	\$767
AKS 38	1" Socket Weld	148H3206	\$743
AKS 38	3/4" FPT	148H3207	\$743

Flanges included with AKS-38 Float Switch

Contact Danfoss for other connection types/sizes.



Features

- Reliable SPDT micro switch
- Protection from high and low levels
- Operates liquid solenoid valve
- Transparent switch box cover for visual indication
- Switch box can be rotated to improve visibility