



HUSSMANN®

PERFORMANCE PARTS

Shelving Guide

Hussmann Genuine Refrigeration Shelving and Accessories

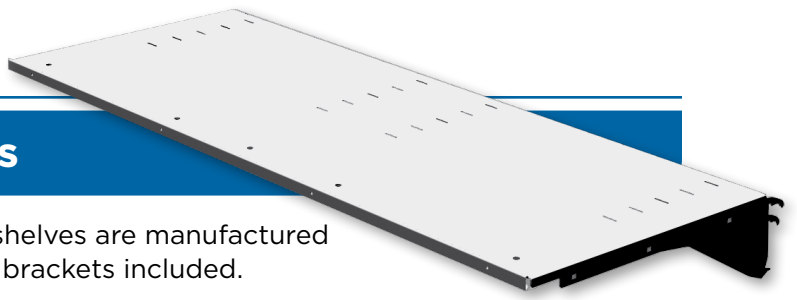
Choose Hussmann Performance Parts for superior reliability, precise compatibility, durable design, and fast delivery.

parts.hussmann.com
1.855.HUSSPRT (1.855.487.7778)

Enabling Excellence in Food Retailing



parts.hussmann.com
1.855.HUSSPRT (1.855.487.7778)



STANDARD MULTI-DECK SHELVES

All Hussmann medium temp multi-deck shelves are manufactured as a single assembly with shelf deck and brackets included.

Finishes: Black, White, Stainless, or Other Optional Colors

Lengths: 36" or 48"

Depths: 12" to 24" in 2" Increments (*Front to Back*)

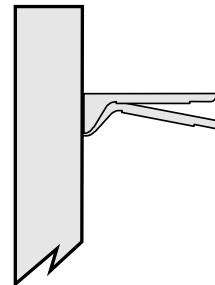
Tilt Positions: 2, 3 and 4 Positions (0°, 10°, 15°, 30° and 45° Tilt Options)

36" - 2 Position

Size	Black	White	Opt Color	Stainless
20" x 36"	FX03M	FW92M	HY93AM	FX14M
22" x 36"	FX04M	FW93M	HY94AM	FX15M
24" x 36"	FX05M	FW94M		

48" - 2 Position

Size	Black	White	Opt Color	Stainless
20" x 48"	FW15M*	FW04M*	HY78AM	FW26M
22" x 48"	FW16M*	FW05M*	HY79AM	FW27M
24" x 48"	FW17M	FW06M	HY82AM	FW28M



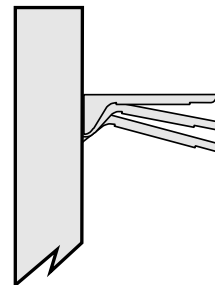
Tilt Options:
0° and 10°

36" - 3 Position

Size	Black	White	Opt Color	Stainless
14" x 36"	FX00M	FW89M		FX11M
16" x 36"	FX01M	FW90M	HY91AM	FX12M
18" x 36"	FX02M	FW91M	HY92AM	FX13M

48" - 3 Position

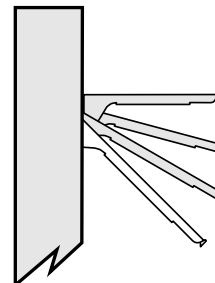
Size	Black	White	Opt Color	Stainless
12" x 48"	FW11M	FW00M	HY75AM	FW22M
14" x 48"	KA65M* ¹	FW01M	HY76AM	FW23M
16" x 48"	FW13M* ¹	FW02M	HY77AM	FW24M
18" x 48"	FW14M* ¹	FW03M*	GF07AM	FW25M



Tilt Options:
0°, 10°
and 15°

48" - 4 Position

Size	Black	White	Opt Color	Stainless
12" x 48"	FW18M ¹	FW07M	HY83AM	FW29M
14" x 48"	FW19M ¹	FW08M	HY84AM	FW30M
16" x 48"	FW20M ¹	FW09M	HY85AM	FW31M
18" x 48"	FW21M ¹	FW10M	GF08AM	FW32M



Tilt Options:
0°, 15°, 30°,
and 45°

¹ Call for M5X shelves.

**NEW
OPTION**

INSIGHT® STANDARD MULTI-DECK SHELVES

Insight medium temp multi-deck shelves are manufactured as a single assembly with shelf deck and brackets included.

Finishes: Black, White, Stainless, or Other Optional Colors

Lengths: 36" or 48"

Depths: 12" to 24" in 2" Increments (*Front to Back*)

Tilt Positions: 2, 3 and 4 Positions
(0°, 10°, 15°, 30° and 45° Tilt Options)

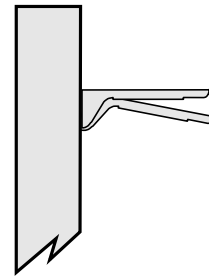


36" - 2 Position

Size	Black	White	Opt Color	Stainless
20" x 36"	OV42	OV43		RG88
22" x 36"	PD45	OV48	QO65AM	RG91
24" x 36"	QO67	QO66		

48" - 2 Position

Size	Black	White	Opt Color	Stainless
20" x 48"	OV39	OV41	OV40AM	RG89
22" x 48"	OV44	OV46	OV45AM	RG92
24" x 48"	PP29	PP28	PP30AM	RG93



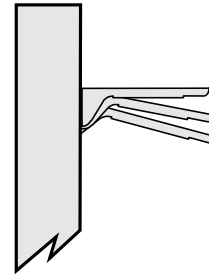
Tilt Options:
0° and 10°

36" - 3 Position

Size	Black	White	Opt Color	Stainless
12" x 36"	RG94	QO62		
14" x 36"	QO63	OV28		RG97
16" x 36"	QO64	PD41	OV32AM	RH03
18" x 36"	OV37	OV38		RH09

48" - 3 Position

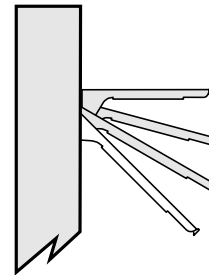
Size	Black	White	Opt Color	Stainless
12" x 48"	QT47	PD40		RG95
14" x 48"	OV25	OV27	RH00AM	RH02
16" x 48"	OV29	OV30	PD42AM	RH07
18" x 48"	OV33	OV34	PD43AM	RH10



Tilt Options:
0°, 10°
and 15°

48" - 4 Position

Size	Black	White	Opt Color	Stainless
12" x 48"	RH26	RH28		RH27
14" x 48"	OY88	QS98	RH45AM	RH32
16" x 48"	RH36	OY89	RH37AM	RH38
18" x 48"	OY90	OY93	RH43AM	RH44



Tilt Options:
0°, 15°, 30°,
and 45°

STANDARD MULTI-DECK SHELVES FOR CLASSIC AND VISION CASES

Light weight multi-deck shelves easily installed, accepts current multi-deck PTM and product stop options that can be installed prior to shipping to store.

Finishes: Black or White

Lengths: 36" or 48"

Depths: 16" to 24" in 2" Increments (*Front to Back*)

Tilt Positions: 2 and 3 Positions
(0°, 10°, and 15° Tilt Options)

**Fits Classic and Vision
Multi-Deck Case Models:
DM, FHD, FHM, ND, NDD, NP,
and RM**

36" - 2 Position

Size	Black	White
20" x 36"	SA74M	SA79M
22" x 36"	SA73M	SA78M
24" x 36"	SA72M	SA77M

48" - 2 Position

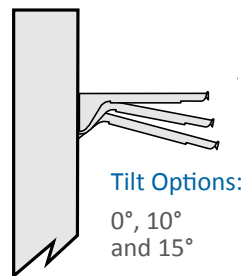
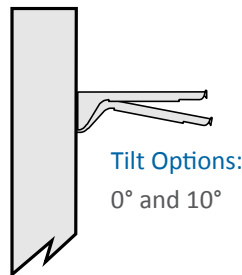
Size	Black	White
20" x 48"	RY24M	RY29M
22" x 48"	RY23M	RY28M
24" x 48"	RY22M	RY27M

36" - 3 Position

Size	Black	White
16" x 36"	SA76M	SA81M
18" x 36"	SA75M	SA80M

48" - 3 Position

Size	Black	White
16" x 48"	RY26M	RY31M
18" x 48"	RY25M	RY30M



**NEW
OPTION**

SHELVES FOR ADDITIONAL MANUFACTURERS' REFRIGERATION CASES

Competitively priced and readily available replacement shelves allow for expanded product merchandising space or replaces worn and damaged shelves.

Hill Phoenix®, Kysor/Warren® and Tyler® medium and low temperature multi-deck cases in stock and ready to ship with price tag molding factory installed.

Finishes: Black or White

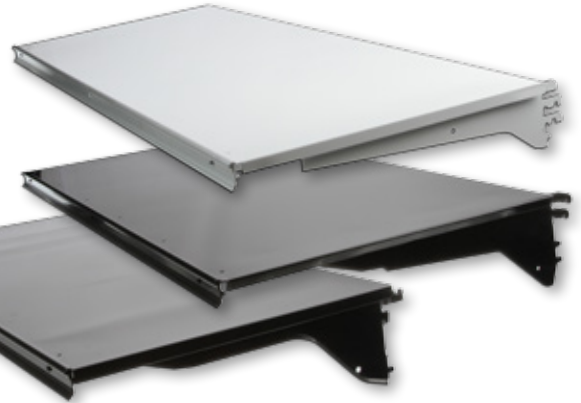
Lengths: 48"

Depths: 16" to 22" in 2" Increments
(Front to Back)

Tilt Positions: 2 Positions (0°, 10° Tilt Options)



- Gloss black aluminum price tag molding factory installed on black shelves.
- Brushed aluminum price tag molding factory installed on white shelves.



**HILL PHOENIX®
48" - 2 Position**

Size	Black	White
16" x 48"	3010479	3010483
18" x 48"	3010480	3010484
20" x 48"	3010481	3010485
22" x 48"	3010482	3010486

**KYSOR / WARREN®
48" - 2 Position**

Size	Black	White
16" x 48"	3011122	3011126
18" x 48"	3011123	3011127
20" x 48"	3011124	3011128
22" x 48"	3011125	3011129

**TYLER®
48" - 2 Position**

Size	Black	White
16" x 48"	3011130	3011134
18" x 48"	3011131	3011135
20" x 48"	3011132	3011136
22" x 48"	3011133	3011137

Call for additional sizes and options.

Hill Phoenix® and Tyler® are registered trademarks of Hill Phoenix, Inc.
Kysor/Warren® is a registered trademark of Heatcraft™ Refrigeration Products, LLC.

STANDARD MULTI-DECK SHELVING OPTIONS

Heavy Duty Beverage Shelves

Finishes: Black, White, Stainless,
or Other Optional Colors

Lengths: 36" or 48"

Depths: 16" to 24" in 2" Increments
(Front to Back)

Tilt Positions: 1 Position Only (0° Tilt)

Depth	1 Position	
	48" Opt Color	36" Opt Color
16 inch	MH97AM	LI19AM
18 inch	MH98AM	LI21AM
20 inch	MI04AM	LI26AM
22 inch	MI02AM*	LI27AM
24 inch	LI33AM*	LI31AM

Peg Bar Shelves

Finishes: Black, White, Stainless,
or Other Optional Colors

Lengths: 36" or 48"

Peg Length: 8" or 12"

Depths: 16" to 22" in 2" Increments
(Front to Back)

Tilt Positions: 1 Position Only (0° Tilt)



Depth	1 Position		
	8" Pegs	12" Pegs	12" Pegs
16 inch		AU31AM	PACE36AU2M
18 inch	KC23AM	AU32AM	PACE36AU3M
20 inch	KC24AM	AU33AM	
22 inch		AU34AM	

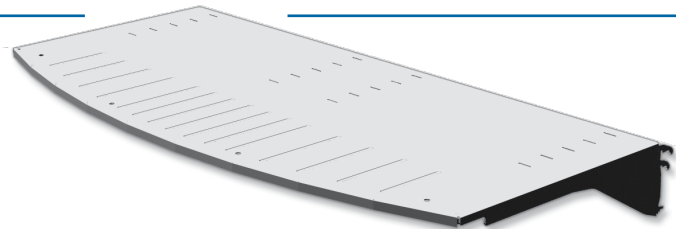
Bump Out Shelves

Finishes: Black, White, or
Other Optional Colors

Lengths: 48" Only

Depths: 18" or 20" - Both with 4" Bump Out
(Front to Back)

Tilt Positions: 2 Position Only (0° and 10° Tilt)



Size	Select Color
18" x 48"	IO96AM
20" x 48"	IO97AM

**NEW
OPTION**

INSIGHT® MULTI-DECK SHELVING OPTIONS

Insight® Heavy Duty Beverage Shelves

Finishes: Black, White, Stainless,
or Other Optional Colors

Lengths: 36" or 48"

Depths: 16" to 24" in 2" Increments (*Front to Back*)

Tilt Positions: 1 Position Only (0° Tilt)



Depth	1 Position	
	48" Opt Color	36" Opt Color
16 inch	OV49AM	
18 inch	OV50AM	OV51AM
20 inch	OV52AM	RI03AM
22 inch	OV53AM	OV55AM
24 inch	PQ40AM	PQ39AM

Insight® Peg Bar Shelves

Finishes: Black, White, Stainless,
or Other Optional Colors

Lengths: 36" or 48"

Peg Length: 8" or 12"

Depths: 16" to 24" in 2" Increments
(*Front to Back*)

Tilt Positions: 1 Position Only (0° Tilt)



Depth	1 Position			
	48"		36"	
	8" Pegs Opt Color	12" Pegs Opt Color	12" Pegs Stainless	12" Pegs Stainless
16 inch		RK28AM		
18 inch	RK31AM	RK29AM	SL40	SL39
20 inch	RK32AM	RK30AM	SL42	SL41
22 inch				
24 inch	RK33AM			

**NEW
OPTION**

INSIGHT® MULTI-DECK SHELVING OPTIONS

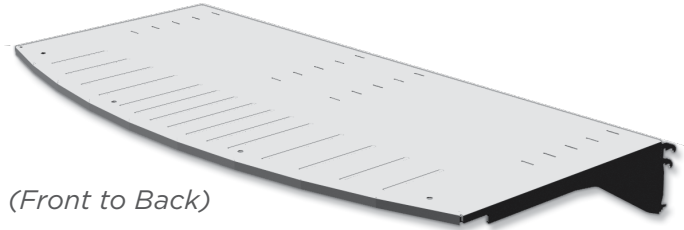
Insight® Bump Out Shelves

Finishes: Black, White,
or Other Optional Colors

Lengths: 48" Only

Depths: 18" or 20" - Both with 4" Bump Out (*Front to Back*)

Tilt Positions: 2 Position Only (0° and 10° Tilt)



2 Position

Depth	48"
	Opt Color
18 inch	R105AM
20 inch	R106AM

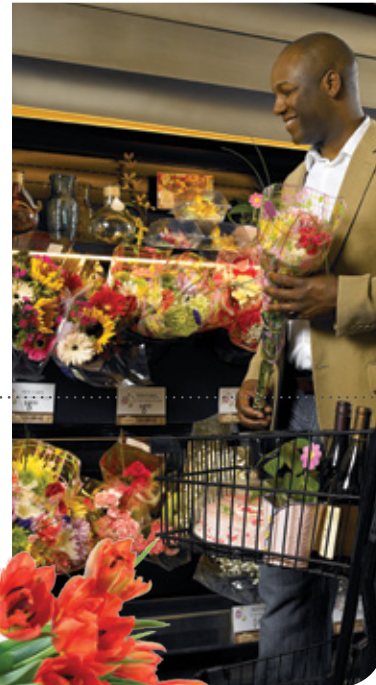
Insight® Floral Cutout Shelves

Finishes: Black, White, Stainless,
or Other Optional Colors

Lengths: 36" or 48"

Depths: 14" to 22" in 2" Increments
(*Front to Back*)

Tilt Positions: 4 Positions
(0°, 10°, 15°, 30° and 45° Tilt Options)



4 Position

Depth	48"	36"
	Opt Color	Opt Color
14 inch	RH47AM	RH46AM
16 inch	RH50AM	RH49AM
18 inch	OZ15AM	RH51AM
20 inch	PD46AM	RH52AM
22 inch	RH54AM	RH53AM



STANDARD SHELF LIGHT OPTIONS

Medium Temp Multi-Deck Shelving

Shelf Light Fixtures: LED and Fluorescent Options
(All Fluorescent Lights T-8 Size)



48" LED^{1,2}

LED Color	3000K	3500K	4000K
EcoShine II			
with Magnets Only ³	KLI020	KLI030*	KLI040*
with Magnets and 1-Pin Harness	KLG280	KLG290	KLG300
with Brackets and 1-Pin Harness	KLF630*	KLF640*	KLF650*

36" LED^{1,2}

LED Color	3000K	3500K	4000K
EcoShine II			
with Magnets Only ³	KLH980	KLH990	KLI010*
with Magnets and 1-Pin Harness	KLG250	KLG260	KLG270
with Brackets and 1-Pin Harness	KLF600	KLF610*	KLF620

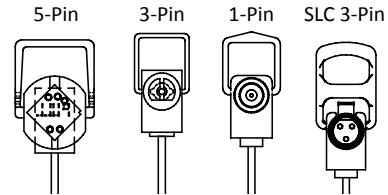
Fluorescent^{4,5}

48" Shelf Light - T-8 Light

Depth	Black	White	Stainless
12 - 14" Deep	KKU750*	KKU910	KKU030
16" Deep	KKU770*	KKU930	KKU090
18 - 20" Deep	KKU790*	KKU950*	KKU150
22 - 24" Deep	KKU810	KKU970	KKU210

36" Shelf Light - T-8 Light

Depth	Black	White	Stainless
12 - 14" Deep	KKU830	KKV000	
16" Deep	KKU850	KKV010	
18 - 20" Deep	KKU870	KKV020	KKU390
22 - 24" Deep	KKU890	KKV040	



LED Harness and Adapters

3-Pin Harness	0523763*
5-Pin Harness	0523764
SLC 3-Pin Harness	0523767
1-Pin Harness	0523768*
1-Pin to 3-Pin Adapter	0503164*
1-Pin to 5-Pin Adapter	0504335
1-Pin to SLC 3-Pin Adapter	0511070



Adapters

SLC 3-Pin to Barrel 3-Pin	0515712
SLC 3-Pin to 5-Pin	0515713

NOTE: Call for additional options, upgrades, or adapter requirements.

¹ For factory installation, option kit must be configured on shelf when ordering.

² EcoShine fixtures and harnesses are only available in black.

³ See chart above for purchasing harness separately.

⁴ Fixtures include harness with SLC 3-pin plug. See chart above for adapter if needed.

⁵ For factory installation, option kit must be configured on shelf when ordering.

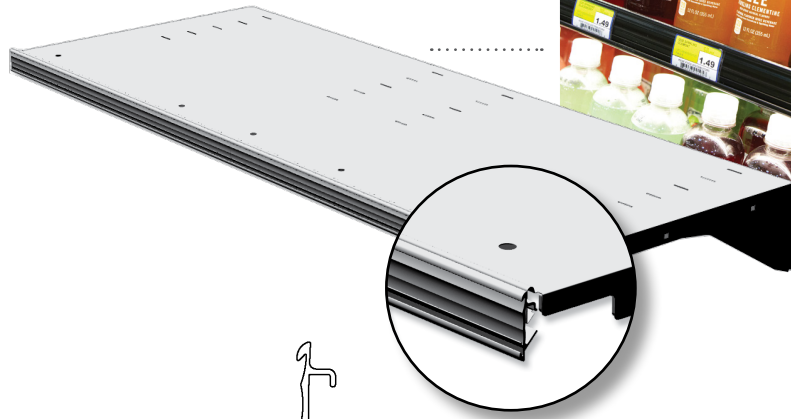
STANDARD MULTI-DECK SHELF PRICE TAG MOLDING (PTM) OPTIONS

Finishes: Plastic: Black, White or Silver
 Aluminum: Black, White or Optional Colors

Standard Height: 1 1/2" (Other PTM Heights Available on Request)

Holds Price Tag Sizes: 1" or 1 1/4"

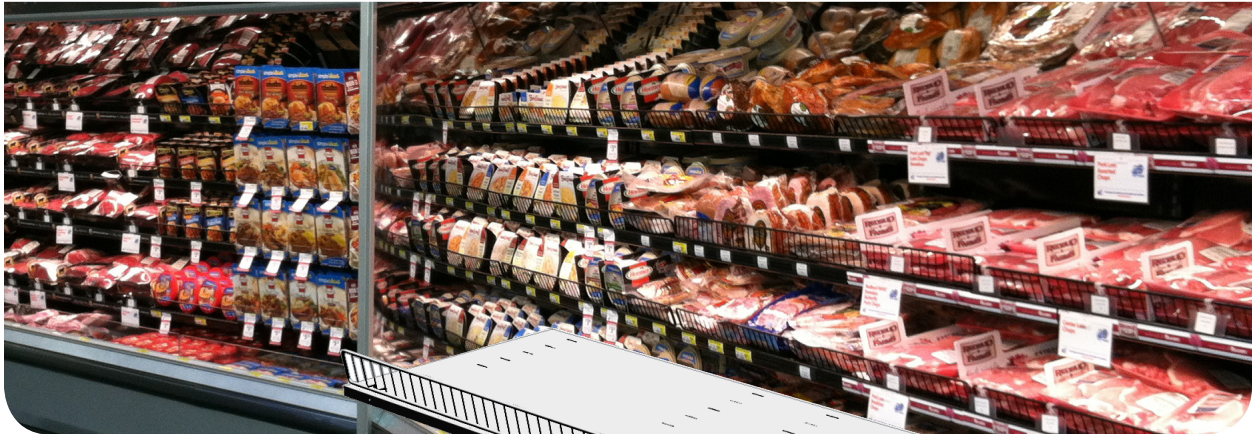
Lengths: 36" or 48"



Finish	Metal Slide-On – 48"			Plastic Slide-On – 48"		
	Field Installed	Factory Installed		Field Installed	Factory Installed	
	Both	Excel and Impact	Insight	Both	Excel and Impact	Insight
Polished	0406168	AA440	RE95			
Anodized	0114767*	AA450*	RE94			
Black	0114765AM*	KLQ670*	RD66	0464754*	HM930*	OZ58
White	0114765AM	KLQ680	RD66	0464753*	HM920*	OZ57
Silver	0114765AM			0466253	HQ210	PD92

Finish	Metal Slide-On – 36"			Plastic Slide-On – 36"		
	Field Installed	Factory Installed		Field Installed	Factory Installed	
	Both	Excel and Impact	Insight	Both	Excel and Impact	Insight
Polished	0532894	OU260	RF07			
Anodized	0114769	FU980	QY42			
Black	0114768AM	FU220*	OZ59	0472343	IC270	PD27
White	0114768AM	FU220	OZ59	0472342	IC260	OZ60
Silver	0114768AM			0472344	IC280	RH62

STANDARD MULTI-DECK SHELF WIRE PRODUCT STOPS

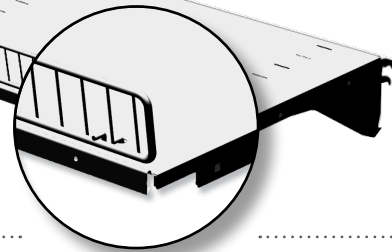


Finishes: Black or White

Heights: 2 ½", 3" or 4"

Lengths: 36" or 48"

Cases: Excel, Impact and Insight



48" Wide

Height	Black	White
2.5 inch	0360259*	0101895
3 inch	0529725*	0529724
4 inch	0364012	0101896

36" Wide

Height	Black	White
2.5 inch	0392935	0373207
3 inch	0532890	0532889
4 inch	0400662	0400659

STANDARD MULTI-DECK SHELF ACRYLIC PRODUCT STOPS



Heights: 1", 2", 2 ½", 3", 4", 4 ½" or 5"

Lengths: 36" or 48"

PTM Height: 1 ½"

Holds Price Tag Sizes: 1" or 1 ¼"

48" Wide

Height	Clear Acrylic		With Painted PTM	
	Excel and Impact	Insight	Excel and Impact	Insight
1 inch ¹	AI840			
2 inch	AI850*	OZ25	PQ94AM	
2.5 inch	FZ130			
3 inch	AX450*	OZ26	KR19AM	RD95AM
4 inch	AQ57M*	OZ27, QU84	KE25AM	
4.5 inch		OZ28		RE95AM
5 inch		RG06, SB14		RE93AM

36" Wide

Height	Clear Acrylic		With Painted PTM	
	Excel and Impact	Insight	Excel and Impact	Insight
1 inch ¹	PACE36AICO			
2 inch	PACE36AIDO	RG08	PQ95AM	RD73AM
3 inch	HB400	OZ29	KT220	RH61AM
4 inch	PACE36AQ00	PG04	QJ30AM	RH66AM
5 inch		SB13		

¹ Total product stop height with brackets.

STANDARD MEDIUM TEMP MULTI-DECK DISPLAY PANS



Finishes: Black or White

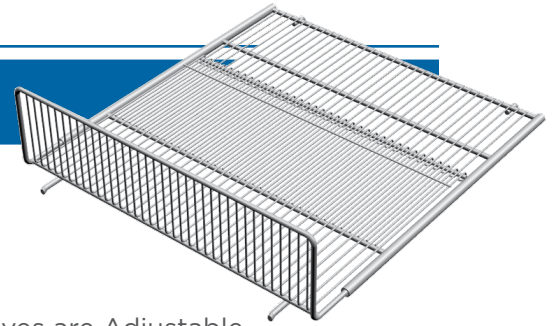
Material: Plastic or Metal
or Other Optional Colors



Model	Depth	Descr.	Black	White	Opt Color	Stainless
C, D, M, P	30"	Angled	0392735*	0376559*		
C5, C6, D5, D6	30"	Flat	0406065*	0406075*	0419382AM	0419381
CX, DX, DD _X , MX, PX	30"	Angled	0506496*	0506495*	0501657AM	0501659
CNX, DDNX, DN _X , MN _X , PN _X	25.25"	Angled	0519498	0519497	0486468AM	0511017
DXU, DD _{XU}	30"	Flat	0486151AM	0486151AM	0486151AM	0500690
IC, ID, ID _D , IM, IP	30"	Angled	0534320	0534319	0557358AM	0557412
ICN, IDN, ID _{DN} , IMN, IPN	24.75"	Angled	0550999	0550998	0538590AM	3034164
ID5SL, ID _D 5SL	30"	Flat	0533038	0533039		

Call for Heavy Duty Options available.

STANDARD MULTI-DECK WIRE RACK OPTIONS



Telescoping, Fixed and Heavy Duty

Finishes: Black or White

Material: Plastic Coated Metal Wire

Lip Heights: Lip Height is Not Adjustable. Telescoping Shelves are Adjustable.

Telescoping	Standard				Heavy Duty	
Model	Lip	Size	Black	White	Black	White
CNX, DDNX, DNX, ICN, IDN, IDDN, IMN, IPN, MNX, PNX,		21-30" X 24"	0515615	0515616		
BX, CX, CXEC, CFX, DX, DDX, IC, ID, IDD, IM, IP, MX, MEX, PX		27-37.5" X 24"	0514078*	0514079*	0443157	0483355
IC, ID, IDD, IM, IP	4"	23-33.5" X 24"	0555852	0555856		
CNX, CX, DDNX, DDX, DNX, DX, IC, ICN, ID, IDN, IDD, IDDN, IM, IMN, IP, IPN, MNX, MX, PNX, PX	4"	23-33.5" X 24"	0515147*	0515384		
CNX, CX, DDNX, DDX, DNX, DX, IC, ICN, ID, IDN, IDD, IDDN, IM, IMN, IP, IPN, MNX, MX, PNX, PX	6"	23-33.5" X 24"	0515613	0515614		

Fixed	Standard				Heavy Duty	
Model	Lip	Size	Black	White	Black	White
CX, DX, DDX, IC, ID, IDD, IM, IP, MX, PX		30" X 24"	0523703		0515180	0515398
DXU, DDXU, ID, IDD	1.5"	30" X 24"	0525655	0525656		
DXU, DDXU, ID, IDD	3"	30" X 24"	0518075*	0512422*		

Flip-Up	Standard				Heavy Duty	
Model	Lip	Size	Black	White	Black	White
ICN, IDN, IDDN, IMN, IPN		21-30" X 24"	0534277	0534276		
IC, ID, IDD, IM, IP		27-37.5" X 24"	0534275	0534274		

Support Brackets	Standard				Heavy Duty	
Model	Lip	Size	Select Color	Select Color	Select Color	Select Color
All Excel and Impact		36"	0444598AM		0471962AM	
All Excel and Impact		48"	0417995AM		0471961AM	
All Insight		36"	0535312AM			
All Insight		48"	0535287AM			



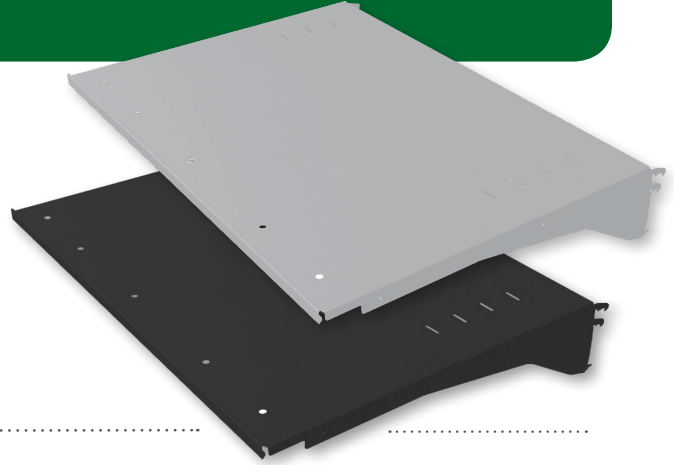
REACH-IN SHELVES

All Hussmann Reach-In shelves are manufactured as a single assembly with shelf deck and brackets included.

Finishes: Black, White, Stainless, or Other Optional Colors

Width: 30"

Depths: 18" to 26" in 2" Increments
(Front to Back)



Size	Black	White	Opt Color	Stainless
18" x 30"	FX5300	FX50M	FX5900	FX5600
20" x 30"	GJ51M	PV29		
22" x 30"	FX54M*	FX51M*	FX60AM	FX57M
24" x 30"	FX55M	FX52M	FX61AM	
26" x 30" ¹	OT00	OF20		

¹ 26" shelves require structural upgrade kits for RL Cases.

REACH-IN CLASSIC AND VISION SHELVES

Light weight multi-deck shelves easily installed, PTM and product stop options installed prior to shipping to store.

Finishes: Black or White

Lengths: 30"

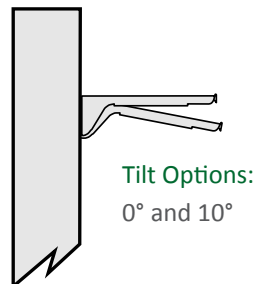
Tilt Positions: 2 Positions (0° and 10°)

**NEW
OPTION**

**Fits Classic and Vision Models:
NR, RC, RF, RLW, and RM**

30" - 2 Position

	Black	White
22" x 30"	RY21M	RY18M



Tilt Options:
0° and 10°

REACH-IN SHELVING OPTIONS



Specialty Reach-In Shelves

Finishes: Black, White, Stainless, or Other Optional Colors

Width: 30"



Floral Glass Shelf

Floral Shelf with Cutout

CO68AM	DH62AM	IB79AM
14" x 30" Floral Glass Shelves	22" x 30" Heavy Duty Optional Color	14" x 30" Floral with Cutout

REACH-IN SHELVING OPTIONS

Reach-In Wire Shelves

Finishes: Black or White

Materials: Plastic Coated Metal Wire

Lip Height: 2 ½" or 4"



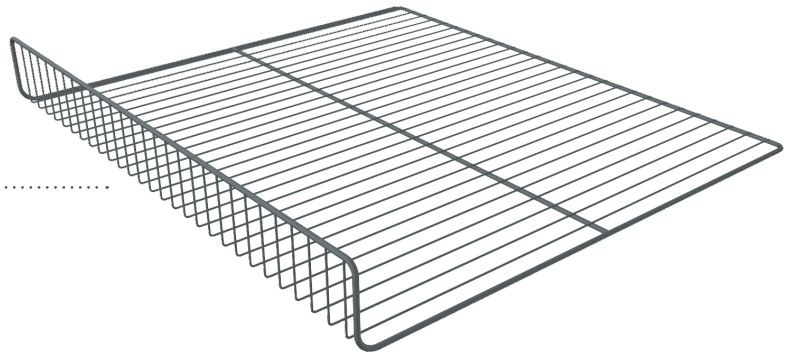
Size	Style	Black	White	White w/PTM
21" x 30"	2.5" Lip	BP8400	BC5200*	
21" x 30"	Flat	GA9600	BF1300*	
22" x 30"	4" Lip	CA3100	BP8700	
22" x 30"	4" Slant	DD6400	BP8800	
22" x 30"	Flat	MQ75AM	MQ75AM	
23" x 30"	2.5" Lip		BF1400	NF65*

Reach-In Wire Racks

Finishes: Black or White

Materials: Plastic Coated Metal Wire

Lip Height: 2" or 4"



Model	Size	Black 4" Lip	White 4" Lip	Black 2" Lip	White 2" Lip
RL	27" X 30"	0515178	0515177	0517119	0517118
RLN	23" X 30"	0515182*	0515181		0519244
RLT ¹	20" X 30"	0445190*	0445189		

¹ 2003 - 2014 model years.

REACH-IN SHELF PRICE TAG MOLDING (PTM) OPTIONS

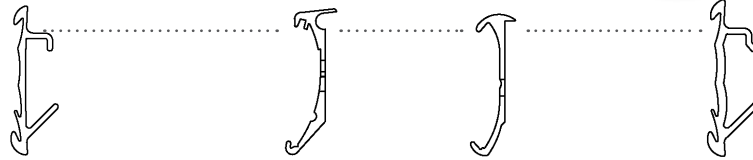
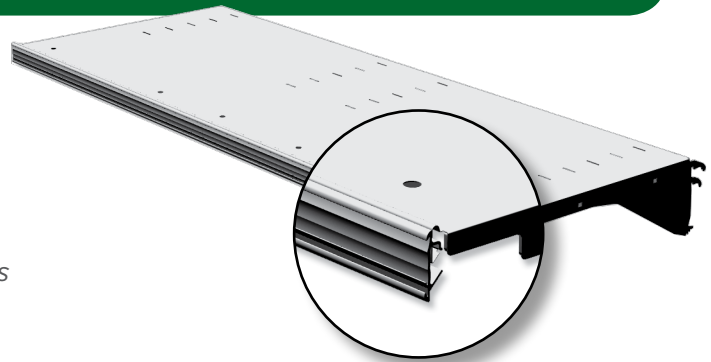
Standard Shelf PTM Options

Finishes: Plastic: Black, White or Silver
Aluminum: Black, White or Optional Colors

Length: 30"

Standard Height: 1 1/2" (Other PTM Heights Available on Request)

Holds Price Tag Sizes: 1" or 1 1/4"



30"	Metal Slide-On		Metal Riveted 4T 1.25"	Metal Riveted 4P 1.25"	Plastic Slide-On	
	Field Installed	Factory ¹ Installed	Factory ¹ Installed	Factory ¹ Installed	Field Installed	Factory ¹ Installed
Anodized	0333651*	KLO250*	KLQ690	BC470		
Polished	0377403	KLO260	KLQ700	KLQ730		
Black	0368781AM*	KLO280*	KLQ710	KLQ750	0464752*	HM910*
White	0368781AM	KLO270	KLQ720	KLQ740	0464751*	HM900*
Silver					0466252	QA060

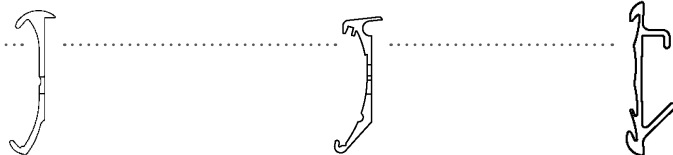
¹ For factory installation, option kit must be configured on shelf when ordering.

Wire Shelf and Rack PTM Options

Finishes: Black, White or Optional Colors

Material: Aluminum

Holds Price Tag Sizes: 1" or 1 1/4"



Finish	1.25"	1.25" 4T	1.5"
Painted	BC36AM*	BC33AM*	BC30AM*
Anodized	BC3400	BC3100	BC2800*
Polished	BC3500	BC3200	BC2900

Note: Kits include mounting brackets and screws.

REACH-IN DISPLAY PANS



Display Pans

Finishes: Black or White

Materials: Plastic or Metal
(Call for Optional Colors)



Model	Size	Black	White
RL, RLN	24" X 30"	0433302	0347340
RLT ²	20" X 30"	0445206AM	0445206AM

² 2003 - 2014 model years.



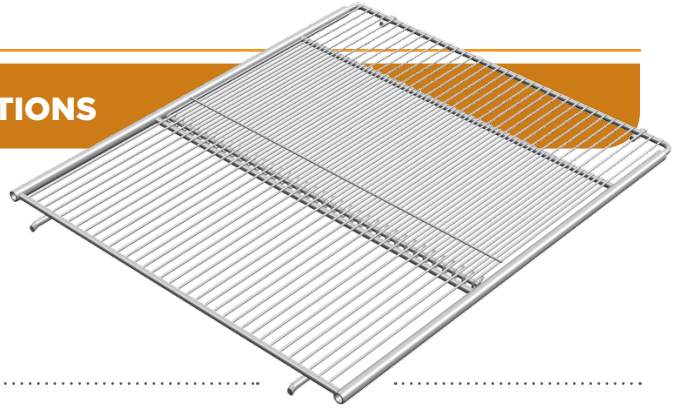
LOW TEMP ISLAND WIRE RACK OPTIONS

Telescoping and Fixed

Designed for low temp island cases.

Finishes: Black or White

Material: Plastic Coated Metal Wire



Telescoping

Model	Size	Black	White
F, FG, FL, FN, FW, FWE, L, LN, LW, LWE, LWU	37.5-27" X 24"	0515020*	0515019*
FI, FIG, LI, LIG	49.75-37.25" X 24"	0429937	0409250

Fixed

F, FG, FL, FN, FW, FWE, L, LN, LW, LWE, LWU	32" X 24"	0481860	0481655
FI, FIG	47" X 24"	0481859	0481656
LI, LIG	41" X 24"	0429161	0429160

Wire Shelf Support Bracket

All F Models	22.875" Long	0513975AM	0513975AM
--------------	--------------	-----------	-----------

Display Pans

Designed for low temp island cases.

Finishes: Black or White

Material: Plastic or Metal



Model	Size	Black	White
F, FG, FL, FN, FW, FWE, LWE	32.75" X 25.5"	0397719*	0392432*
FI, FIG	47" X 24"	0458053AM	0458053AM*
LI	43.75" X 25.8"	0406743	0392429
LN, LW, LWU	32" X 25"	0403053	0392427*
LWU Ends	30.6" X 25.8" (center)	0409851	0392428
	30.6" X 25.8" (left hand)	0409852	0392430
	30.6" X 25.8" (right hand)	0409853	0392431



ENTYCE ISLAND SHELVES

All Entyce shelves are manufactured as single assembly with PTM included.

Finishes: Black, Stainless or White

Width: 24", 36", 48", 60" or 72"

Depths: 8" to 16" in 2" Increments (*Front to Back*)

Accessories: Varied PTM Heights, PTM Angle, Product Stop, Product Stop Angle and LED Lights (*Available Upon Request*)



Please call 1.855.HUSSPRT for custom shelf configuration specific to your case.





ISLA SHELVES

All ISLA shelves are manufactured as single assembly with 1 ¾" PTM included.

Finishes: Black (*Other Colors and Stainless Available Upon Request*)

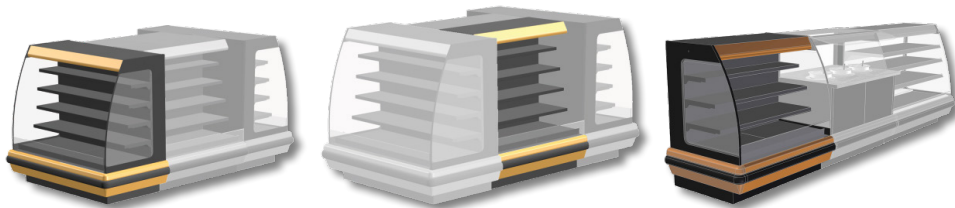
Width: 36", 48" or 60"

Depths: 8" to 20" in 2" Increments (*Front to Back*)

Accessories: Additional PTM Heights, PTM Angle, Product Stop, Product Stop Angle and LED Lights (*Available Upon Request*)



Depth	36"	48"	60"
10"	3013455	0556880	0558410
12"	3013456	0556882	0558347
14"	0562377	0556884	0559614
16"	3007509	0557236	0556710
18"	0562055	0556984	0556988



*These shelves fit ISLA cases manufactured in Chino assembly plant.
Call 1.855.HUSSPRT for part numbers for cases from other plants.*

Shelving and Accessories

With genuine refrigeration shelving and shelf accessories from Hussmann Performance Parts, you will be receiving the quality, reliability and component compatibility you expect from all Hussmann equipment. Our shelves are made from corrosion-resistant materials and painted with our durable powder-coated painting process.

Benefits of Hussmann Shelving:



- **RELIABILITY**
Hussmann shelving and accessories are built to last through years of heavy use.
- **COMPATIBILITY**
Designed for precision fit in Hussmann display cases.
- **STRENGTH**
Meet or exceed all applicable load capacities.
- **EASY CLEANING**
Smooth, powder-coated painted surfaces are easy to keep clean.
- **EASY HANDLING**
Light enough to be installed by one person.
- **CASE PROTECTION**
Shelf brackets designed to protect case uprights if shelf is overloaded.
- **STRUCTURAL RIGIDITY**
Shelves will not appear to bend or sag under normal loads.
- **ACCESSORIES**
Shelves accept a wide variety of available accessories such as PTM, product stops, lights, and specialty shelving.
- **ANTIMICROBIAL PROTECTION**
Microban® antimicrobial protection is infused in the paint of select shelves and door handles.



antimicrobial product protection

MICROBAN® is a registered trademark of Microban Products Company.

HUSSMANN®

**Hussmann Corporation
Performance Parts**

12999 St. Charles Rock Rd.
Bridgeton, MO 63044-2483
Ph: 1.855.HUSSPRT (1.855.487.7778)

www.hussmann.com/parts